

2014

# Mainboard

## Product Launch Guide

--[**NLBT-IE2930-4G**]

NL Series Motherboard



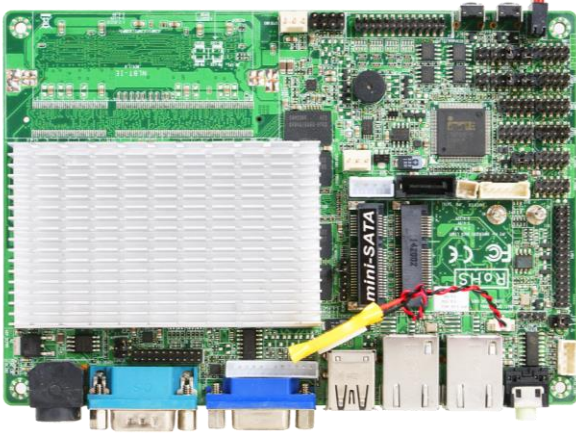
Jetway Information Co., Ltd.

[www.jetway.com.tw](http://www.jetway.com.tw)

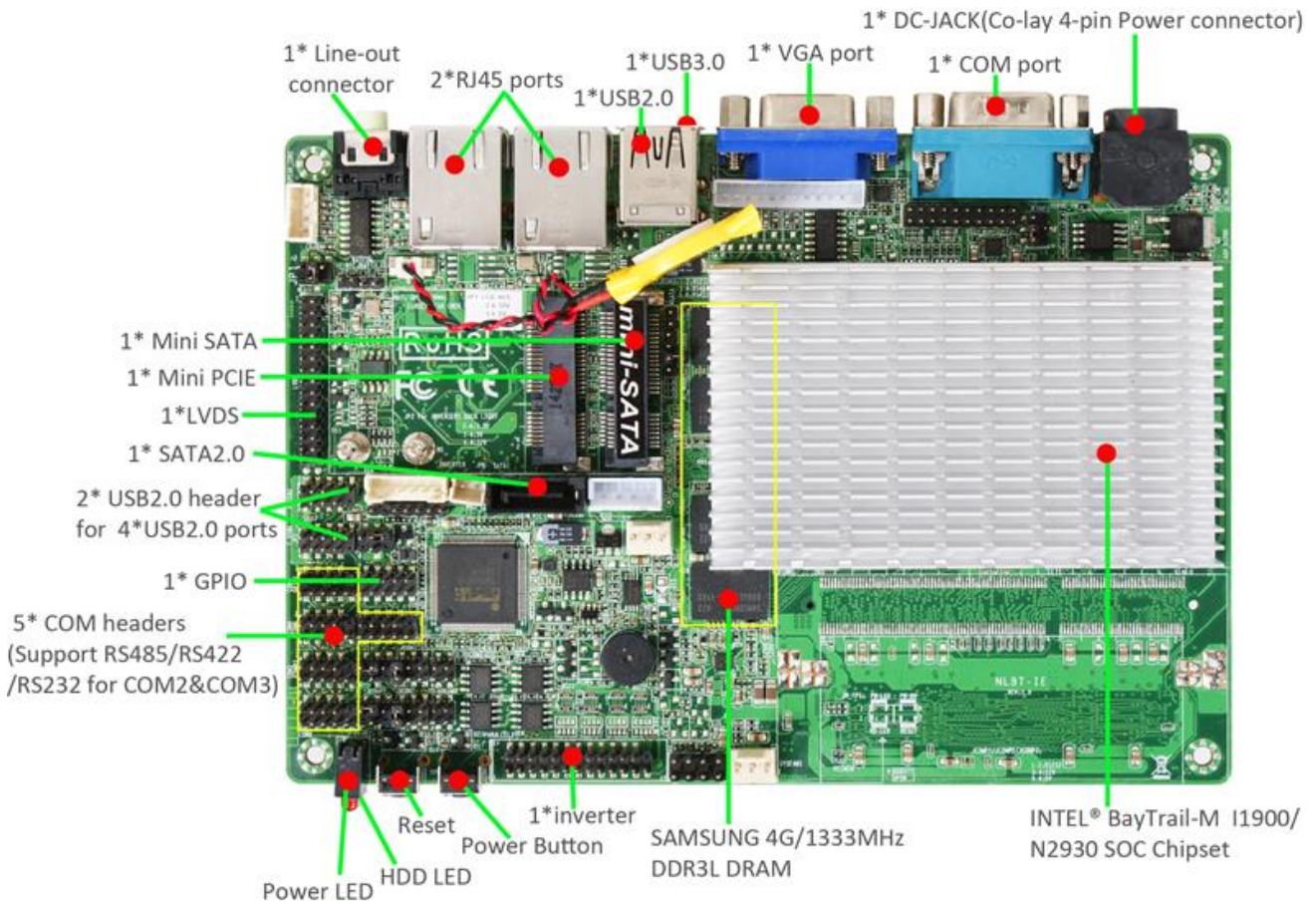
DATE: JULY, 03, 2014



## NLBT-IE2930-4G



1. INTEL® BayTrail--M N2930 SOC Chipset
2. Onboard INTEL® BayTrail-M N2930 1.83GHz Quad Cores CPU
3. Support DirectX 11 3D Graphics Acceleration
4. On Board SAMSUNG 4G/1333MHz DDR3L DRAM
5. Integrated HD Audio CODEC
6. Support 2\*PCI Express INTEL Gigabit LAN
7. Support 1\*SATA2.0
8. Support 6\*COM ports
9. Support 1\*USB3.0 port
10. Support SIM Card Socket
11. Support 24-bit Dual channel
12. Onboard 1\*MiniPCI-E connector(Half size)
13. Onboard 1 \*M- SATA connector(Full size)
14. All Tantalum Capacitor design
15. Support power onboard(wide voltage input :9~24V)
16. EPIC Form Factor(165mm X115mm)



## Specifications

■ CPU	<ul style="list-style-type: none"> <li>■ On board INTEL® BayTrail-M N2930 1.83GHz Quad Cores CPU</li> <li>■ 2 Phase CPU Power Support</li> </ul>
■ Chipset	<ul style="list-style-type: none"> <li>■ INTEL® BayTrail-M N2930 SOC Chipset</li> </ul>
■ I.O Chipset	<ul style="list-style-type: none"> <li>■ ITE IT8786E</li> </ul>
■ Memory	<ul style="list-style-type: none"> <li>■ Onboard SAMSUNG 4G/1333MHz DDR3L DRAM</li> </ul>
■ Expansion Slots	<ul style="list-style-type: none"> <li>■ 1* Mini PCI-E connector(Half size)</li> </ul>
■ Storage	<ul style="list-style-type: none"> <li>■ 1* Serial ATA2 3Gb/s connector</li> <li>■ 1* M-SATA Connector(Full size)</li> </ul>
■ Audio	<ul style="list-style-type: none"> <li>■ ALC662 Audio CODEC</li> <li>■ HD Audio CODEC</li> </ul>
■ Ethernet LAN	<ul style="list-style-type: none"> <li>■ 2* GIGALAN</li> <li>■ INTEL® i211AT Chip</li> </ul>
■ LVDS	<ul style="list-style-type: none"> <li>■ Onboard 24-bit Dual channel</li> </ul>
■ USB	<ul style="list-style-type: none"> <li>■ 5* USB 2.0/1.1(1 distribute in back panel, 4 distribute in mid-board)</li> <li>■ 1* USB3.0 (distribute in back panel)</li> </ul>
■ Special Features	<ul style="list-style-type: none"> <li>■ Support CPU Smart Fan</li> <li>■ Support Watch dog Technology</li> <li>■ Support GPIO Technology</li> <li>■ Support Power Onboard (9~24v wide voltage input)</li> <li>■ Support VGA header</li> <li>■ Support 1*20-pin HDMI header</li> <li>■ Support SIM Card socket</li> <li>■ Support 2*RS422/RS485/RS232 for COM2&amp;COM3</li> <li>■ Support Amplifier function(3W)</li> <li>■ Support Power&amp; Reset Button</li> <li>■ All Tantalum Capacitor design</li> <li>■ All Power Pack MOSFET design</li> </ul>
■ Back Panel I / O	<ul style="list-style-type: none"> <li>■ 1* DC-Phoenix port(Co-lay 4-pin Power JACK)</li> <li>■ 1* USB2.0/1.1 port</li> <li>■ 1* USB3.0 port</li> <li>■ 2* RJ-45 ports</li> <li>■ 1* COM port</li> <li>■ 1* Line-out connector</li> <li>■ 1* VGA port (Max. Resolution: 1920*1080@60Hz)</li> </ul>
■ Internal I / O	<ul style="list-style-type: none"> <li>■ 2* USB 2.0/1.1 headers for 4 USB 2.0/1.1 ports</li> <li>■ 1* CPU / Chassis Fan connector</li> <li>■ 2* System Fan connectors</li> <li>■ 5* COM headers (Support RS485/RS422/RS232 for COM2&amp;COM3)</li> <li>■ 1* Parallel header</li> </ul>

	<ul style="list-style-type: none"> <li>■ 1* 4-pin SATA Power connector</li> <li>■ 1* 12-pin VGA header (Max. Resolution: 1920*1080@60Hz)</li> <li>■ 1* 20-pin HDMI header (Max. Resolution: 1920*1200@60Hz)</li> <li>■ 1* 24-bit Dual Channel LVDS header (Max. Resolution: 1920*1200@60Hz)</li> <li>■ 1* 4-pin Amplifier header</li> <li>■ 1* GPIO header</li> <li>■ 1* Mini PCI-e connector</li> <li>■ 1* M-SATA connector</li> <li>■ 1* SATA2.0 connectors</li> <li>■ 1* 4-pin PS/2 header</li> </ul>
■ BIOS	<ul style="list-style-type: none"> <li>■ AMI 64MB DIP Flash ROM</li> </ul>
■ Temperature	<ul style="list-style-type: none"> <li>■ Operating: 0°C ~ 60°C</li> <li>■ Storage: -20°C ~ 85°C</li> </ul>
■ Form Factor	<ul style="list-style-type: none"> <li>■ EPIC Form Factor(165mm X 115mm)</li> </ul>
■ Standard Accessories	<ul style="list-style-type: none"> <li>■ 1* SATA cable (G01-SATAL-RD30-F)</li> <li>■ 2* COM Cable (G01-COM-H2M22-1F)</li> </ul>

\*For further information please visit the website at <http://www.jetway.com.tw>

\*The Specification may be changed without further notice.