

2011

IPC

Product Launch Guide

--[NF9G-QM77]

Based on Intel® QM77 Express Chipset

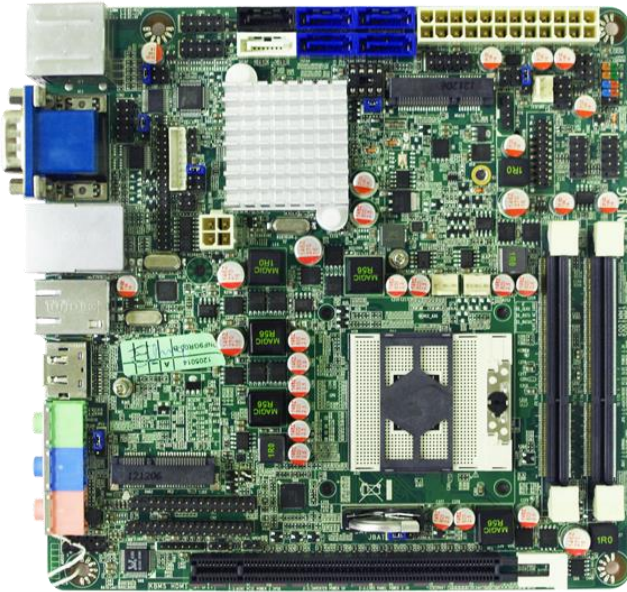


Jetway Information Co., Ltd.

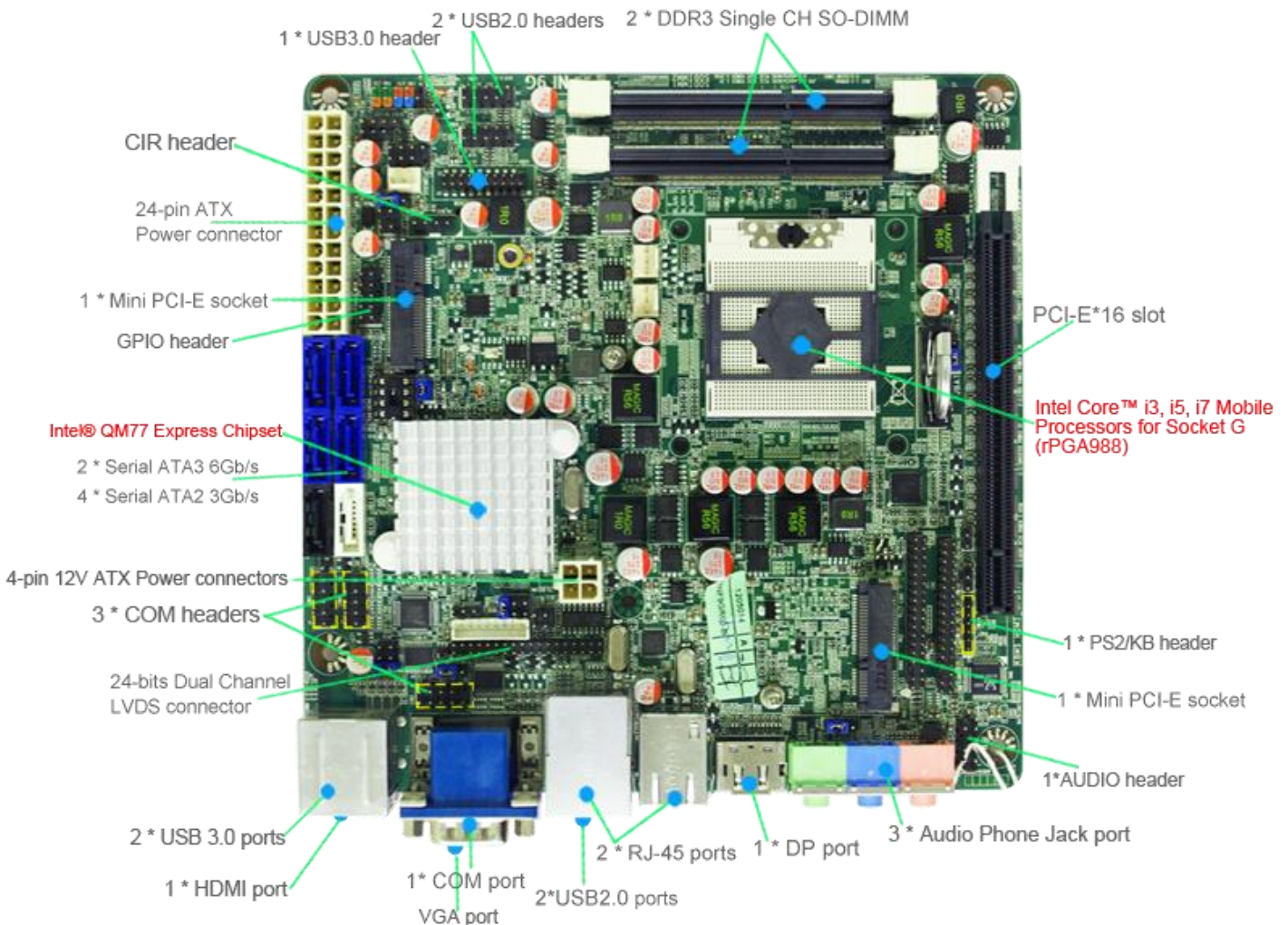
www.jetway.com.tw

DATE: August 13, 2012





1. Intel® QM77 Express Chipset
2. Supports Intel Core™ i3, i5, i7 Mobile Processors for Socket G (rPGA988, max 65W)
3. 2 * Dual Channel DDR3-1333/1066 up to 16GB
4. Intel 82579LM & 82574L Gigabit LAN
5. Intel Active Management Technology (iAMT 8.0)
6. PCI Express x16 Slot
7. Integrated 24-bit Dual Channel LVDS
8. 4-port SATAII 3Gb/s & 2-port SATA III 6Gb/s with RAID 0, 1, 5, 10 Support
9. HDMI, DP and VGA Video Outputs
10. Support Jetway PCI-E Daughter card
11. Built-in Watchdog Timer Technology
12. Mini-ITX Form Factor (170mm x 170mm)



Specifications	
■ CPU	Supports Intel Core™ i3, i5, i7 Mobile Processors for Socket G (rPGA988)
■ Chipset	INTEL® QM77 Chipset
■ Memory	2 * SODIMM Sockets for un-buffered Dual CH DDR3 1333/1066 Max. up to 16GB
■ Expansion Slots	1 *PCIe x 16 2 * Mini PCI-E socket
■ Storage	2 * Serial ATA3 6Gb/s & 4 * Serial ATA2 3Gb/s connectors support RAID 0, 1, 5, 10 1 * mSATA socket (Selectable with full size Mini PCI-E socket)
■ Audio	Realtek ALC662 6-Channel HD Audio CODEC
■ Ethernet LAN	Intel 82579LM & 82574L PCI-E Gigabit Ethernet LAN
■ LVDS	Onboard 24-bit dual channel LVDS connector
■ USB	Embedded 6 * USB 2.0/1.1 & 4 * USB 3.0
■ Special Features	Support ACPI S3 Support CPU Smart FAN Support Watch Dog
■ Rear Panel I / O	2 * USB 2.0/1.1 ports & 2 * USB 3.0 ports 2 * RJ-45 port 1 * HDMI port 1 * COM port 1 * DP port 1 * VGA port 3 * Audio Phone Jack
■ Internal I / O	2 * USB 2.0/1.1 headers for 4 USB 2.0 ports 1 * USB 3.0 headers for 2 USB 3.0 ports CPU /NB / Chassis Fan connectors 3 * COM headers (COM4 for RS232/422/485) 1 * GPIO header 1 * CIR header 1 * Chassis Intrusion header 1 * AUDIO header 1 * 24-pin & 4-pin 12V ATX Power connectors
■ BIOS	AMI EFI 64MB SMT Flash ROM
■ Form Factor	Mini-ITX Form Factor (170mm x 170mm)
■ Functional	ATM, Automation, Medical Equipment, Security, Networking, POS, General Application, Gaming Machine, Transportation, NAS
■ Certificate	CE, FCC, RoHS
■ Temperature	Operating within 0~60 centigrade Storage within -20-85 centigrade

■ **Accessories**

SATA cable

COM Cable

I/O Shield

- For further information please visit the website at <http://www.jetway.com.tw>
- The Specification may be changed without further notice.