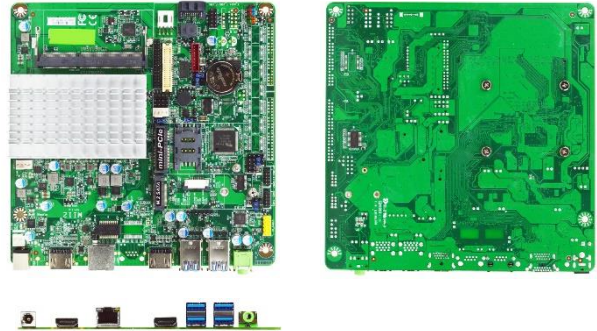


MI12-00L Series

Intel® Apollo Lake SoC Processor, DDR3L up to 8GB, 1* GbE, 2* HDMI, 1* LVDS, 1* eDP, 2* COM

1. Intel® Apollo Lake series SoC Processor. (Default J3455)
2. 1* DDR3L 1866MHz SO-DIMM up to 8GB
3. 1* Realtek RTL8111H GbE
4. 2* HDMI, 1* LVDS, 1* eDP, support triple displays
5. 2* COM, 4* USB3.0, 2* USB2.0
6. 1* Mini PCIe, 1* SIM card slot
7. 1* SATAIII, 1* M.2 (M-key, 2242/2260), 1* 32GB eMMC (option)
8. 12V DC-in



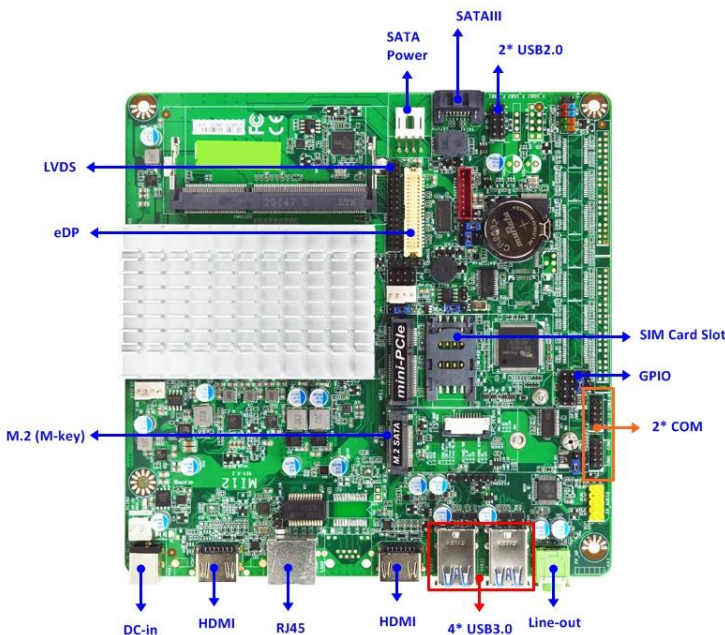
Overview

The JETWAY MI12-00L series are Slim Mini-ITX form factor board adopts the Intel® Apollo Lake SoC Processor. The board supports DDR3L 1866MHz SO-DIMM memory, up to 8GB. Featuring the integrated Realtek Gigabit Ethernet controller, the MI12-00L offers 10/100/1000Base-TX Ethernet device for network transmission. SATAIII (6Gb/s) interface, one M.2 (M-key, 2242/2260) and 32GB eMMC (option) offer storage devices. One Mini PCIe interface, four USB3.0 ports, two USB2.0 ports and two COM ports provide versatile expansion. The MI12-00L series offers eDP interface which can support Max. 4K@60Hz resolution. Because of the above features, MI12-00L series is one of the best selections for digital signage and automation applications.

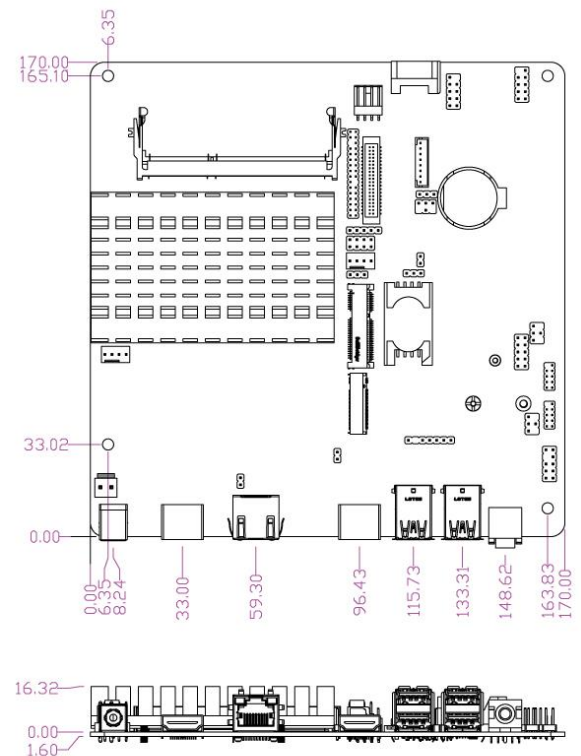
Application

Digital Signage / POS / KIOSK / Industrial Automation

I/O Diagram



Mechanical Drawings (Unit = mm)



Specifications

Model

- MI12-00L
- MI12-02L (W/TPM2.0)

Processor System

- Intel® Apollo Lake SoC Processor
- Intel® J3455 SoC chipset
- AMI 128Mb Flash ROM BIOS

Memory

1* DDR3L 1866MHz SDRAM SO-DIMM up to 8GB

Ethernet

1* Realtek RTL8111H GbE

Storage

- 1* SATAIII (6.0Gb/s)
- 1* M.2 M-key 2242/2260 (SATA interface)
- 32GB eMMC (option) [eMMC is recommend to set as primary boot device for Windows 10 OS boot up](#)

Internal Connector

- 2* USB2.0
- 2* RS232 (COM1~2 with Powered 5V/12V)
- 1* SATAIII
- 1* Mini PCIe (full size)
- 1* M.2 M-key 2242/2260
- 1* LVDS (Selectable with eDP, not working while using LVDS)
- 1* eDP (Selectable with LVDS, not working while using eDP)
- 1* GPIO (4in/4 out)
- 1* SMBUS
- 1* AT mode
- 1* SIM card slot
- 1* PS/2
- 1* TPM2.0 (MI12-02L only)

Power

12V DC-in, AT/ATX Mode Supported

- AT: Directly PWR on as Power input ready
- ATX: Press Button to PWR on after Power input ready

Temperature

- Operating: 0°C ~ 60°C (with 0.7m/s air flow)
- Storage: -20°C ~ 85°C
- Humidity: 10% ~ 90% RH @40°C (non-condensing)

Warranty

2 Years Limited Warranty

* Specifications subject to change without notice, not responsible for typographical errors. Does not include HDD or OS.

Form Factor

Slim Mini-ITX (6.7-in * 6.7-in, 170 * 170mm)

Expansion Slot

- 1* Mini PCIe (full size, USB signal only)
- 1* SIM card slot

Graphics

- Intel® HD Graphics
- 2* HDMI (Max. Resolution: 3840 x 2160@30Hz)
- 1* LVDS (Max. Resolution: 1920 x 1200@60Hz, selectable with eDP, not working while using LVDS)
- 1* eDP (Max Resolution: 3840 x 2160@60Hz, selectable with LVDS, not working while using eDP)
- Support triple displays

Audio

C-Media HS-100B USB Audio Chip

Rear I/O

- 1* RJ45
- 4* USB3.0
- 2* HDMI
- 1* Line-out
- 1* DC-in jack

Watchdog Timer

- From Super I/O to drag RESETCON#
- 256 segments, 0,1,2...255sec

Compliance

CE, FCC, RoHS, REACH

OS Support

Windows 10, Linux

Standard Accessories

Parts Number

Description

MI12-00L Series M/B
F04-MB-069-F I/O shield

Parts Number

Description

G01-COM-H2M22-1F 2* COM cable
G01-PW4PS-2S-322F 1* SATA power cable
G01-SATA3-BL-1F 1* SATA cable