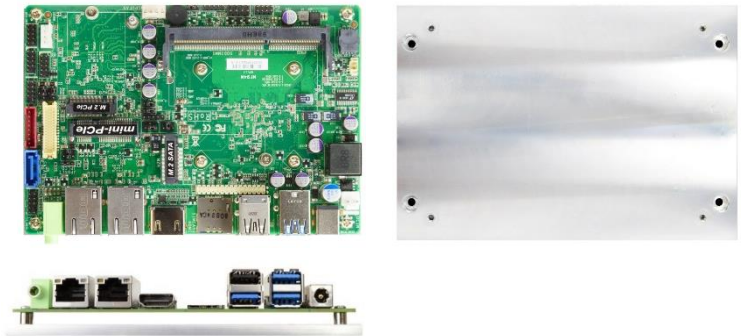


## MF94N Series

Intel® Apollo Lake SoC processor, DDR3L up to 8GB, 1\* M.2 (M-key), 1\* M.2 (B-key), 2\* GbE, 9~36V DC-in

1. Intel® Apollo Lake SoC Processor
2. 1\* DDR3L 1866MHz SO-DIMM up to 8GB
3. 2\* 10/100/1000 Base-TX Ethernet Ports
4. 1\* HDMI, 1\* eDP, 1\* LVDS
5. 2\* COM, 3\* USB3.1 (Gen.1), 3\* USB2.0
6. 1\* M.2 M-key 2242, 1\* M.2 B-key 3042 W/SIM card holder
7. 1\* Full size Mini-PCIe, 1\* SATA III (6Gb/s)
8. Support 9~36V DC-in



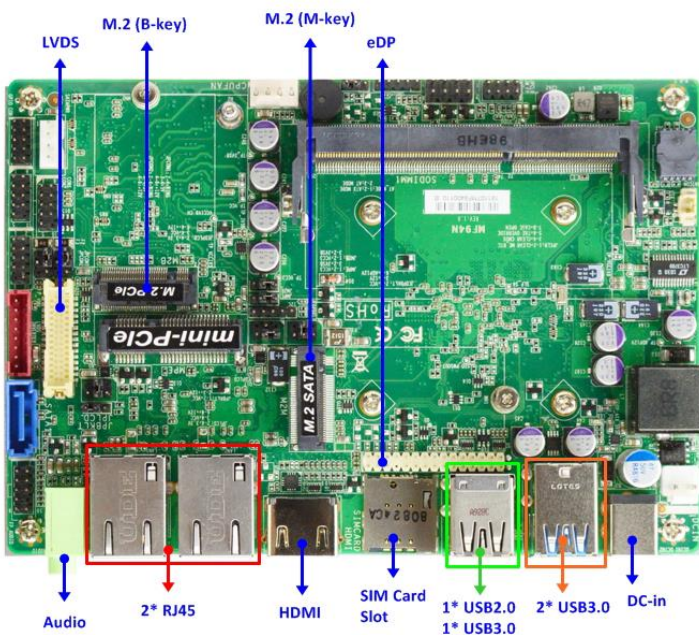
### Overview

The JETWAY MF94N is 3.5" form factor board adopts the Intel® Apollo Lake SoC Processor. The board supports one SO-DIMM DDR3L 1866MHz memory, up to 8GB. Featuring the integrated Intel® Gigabit Ethernet controller, the MF94N offers two 10/100/1000Base-TX Ethernet device for network transmission. One SATAIII (6Gb/s) interface and one M.2 M-key offer storage devices. Three USB3.1 Gen.1 ports, Three USB2.0 ports and two COM ports provide versatile expansion. The M.2 B-key 3042 can support 3G/4G/LTE. The MF94N offers one HDMI port, one eDP port and one LVDS. Because of the above features, MF94N is suitable for Panel PC, IOT Solution applications.

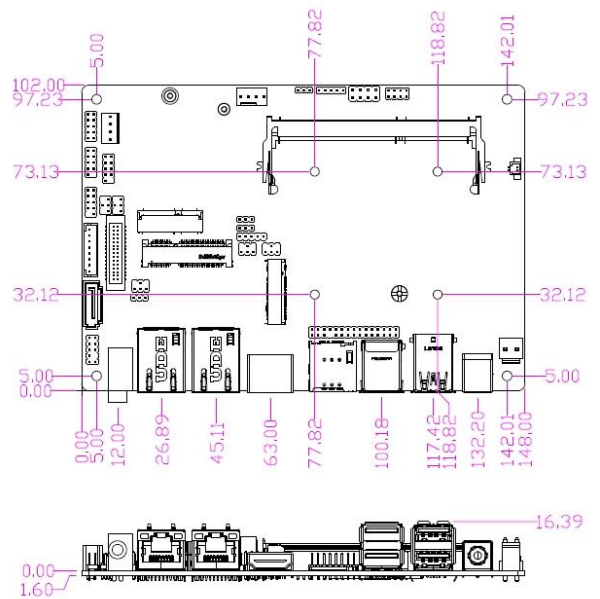
### Application

Panel PC / IOT Solution

### I/O Diagram



### Mechanical Drawings (Unit = mm)



## Specifications

<b>Model</b>	<b>Form Factor</b>
MF94N00 (J3455 CPU_10W, Default) MF94N90 (E3940 CPU_9.5W)	3.5" (5.8-in * 4.0-in, 148 * 102mm)
<b>Processor System</b>	<b>Expansion Slot</b>
<ul style="list-style-type: none"><li>Intel® Apollo Lake J3455 / E3940 SoC Processor (TDP 10W/9.5W)</li><li>AMI Flash ROM BIOS</li></ul>	<ul style="list-style-type: none"><li>1* M.2 M-key (2242) Support SATA interface</li><li>1* M.2 B-key (3042) Support USB3.0 &amp; PCIe1 interface W/SIM card holder</li><li>1* Full size Mini-PCIe Support USB2.0 &amp; PCIe1 interface</li></ul>
<b>Memory</b>	<b>Graphics</b>
1* SO-DIMM DDR3L 1866MHz SDRAM non-ECC up to 8GB	<ul style="list-style-type: none"><li>Intel® HD Graphics, shared memory</li><li>1* eDP (Max Resolution: 4096x2304@60Hz)</li><li>1* LVDS (Max Resolution: 1920 x 1080@60Hz)</li><li>1* HDMI (Max Resolution: 3840x2160@ 30Hz)</li></ul>
<b>Ethernet</b>	<b>Audio</b>
2* Intel® GbE (2* i211AT)	6 channel HD audio: Realtek® ALC662/ALC888S
<b>Storage</b>	<b>Integrated Storage</b>
1* SATAIII	N/A
<b>Rear I/O</b>	<b>Internal Connector</b>
<ul style="list-style-type: none"><li>3* USB3.1 (Gen1)</li><li>1* USB2.0</li><li>1* HDMI</li><li>2* RJ45</li><li>1* SIM card slot (W/M.2 B-key, 3042)</li><li>Line-Out</li><li>DC-in (9~36V)</li></ul>	<ul style="list-style-type: none"><li>2* USB2.0</li><li>1* eDP</li><li>1* LVDS w/ Inverter</li><li>1* RS232</li><li>1* RS232/422/485</li><li>1* SATAIII</li><li>1* GPIO (8 bit)</li><li>1* Audio Header</li><li>1* SMBUS</li><li>1* I2C</li><li>1* CPU FAN</li><li>1* TPM2.0 onboard (option)</li></ul>
<b>Watchdog Timer</b>	<b>Power</b>
<ul style="list-style-type: none"><li>From Super I/O to drag RESETCON#</li><li>256 segments (10sec ~ 255min)</li></ul>	DC-IN 9~36V AT/ATX mode Supported - AT: Directly PWR on as Power input ready - ATX: Press Button to PWR on after Power input ready
<b>Compliance</b>	<b>Temperature</b>
CE, FCC, LVD, RoHS, REACH	<ul style="list-style-type: none"><li>Operating: MF94N00: 0°C ~ 60°C MF94N90: -40°C ~ 85°C</li><li>Storage: -40°C ~ 85°C</li></ul>
<b>Warranty</b>	
2 Years Limited Warranty	

\* Specifications subject to change without notice, not responsible for typographical errors. Does not include HDD or OS.

## Accessories

Parts Number	Description	Parts Number	Description
-----	MF94N Series M/B		