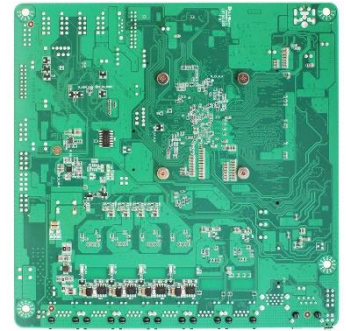


LI36 Series

Mini ITX size with Elkhart Lake J6412 SoC Processor, DDR4 up to 32GB, 6* 2.5GbE, support 3 display

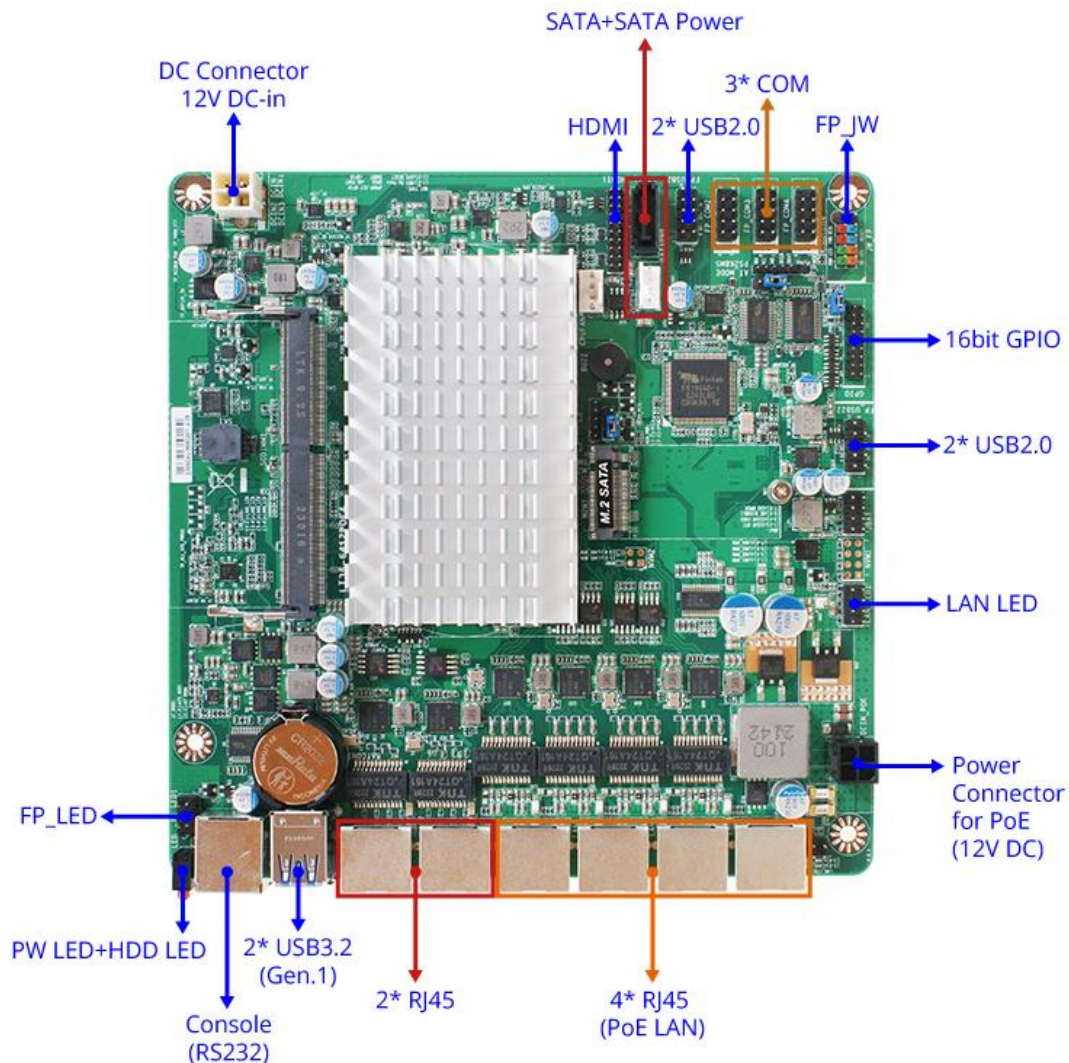
Features

1. Intel® Elkhart lake J6412 SoC Processor (2.0GHz/QC)
2. 1* DDR4 3200MHz SO-DIMM up to 32GB
3. 6* 2.5 GbE (LAN3/4/5/6 Support PoE, 802.3af/at compliance)
4. 2* USB3.2 (Gen.1), 4* USB2.0
5. 4* COM (COM1: RS232 for RJ45, COM2: RS232/422/485, COM3/4: RS232)
6. 1* M.2 M-key (2242 SATA interface), 1* SATAIII
7. Onboard TPM2.0 (Option)
8. 12V DC-in/12V DC-in



intel. FC CE RoHS COMPLIANT

I/O Diagram



Specifications

Model	<ul style="list-style-type: none"> LI36-64120P4 LI36-64122P4 (TPM2.0)
Form Factor	<ul style="list-style-type: none"> Mini ITX (170 * 170mm)
Processor System	<ul style="list-style-type: none"> Intel® Elkhart Lake J6412 2.0G/QC SoC Processor AMI Flash ROM BIOS
Memory	<ul style="list-style-type: none"> 1* DDR4 3200MHz So-DIMM up to 32GB
Storage	<ul style="list-style-type: none"> 1* SATAIII (6Gb/s) 1* M.2 M-key (2242 SATA interface, Support SSD)
Expansion	<ul style="list-style-type: none"> NA
Ethernet	<ul style="list-style-type: none"> 6* Intel® I225-V 10/100/1000/2500Mbps LAN3/4/5/6 PoE LAN, Support IEEE 802.3af/at (Total Max 100W)
Graphics	<ul style="list-style-type: none"> Intel® HD Graphics, shared memory 1* HDMI1.4 (Max Resolution: 2560x1600@60Hz)
Audio	<ul style="list-style-type: none"> NA
Watchdog Timer	<ul style="list-style-type: none"> From Super I/O to drag RESETCON# 256 segments (10sec ~ 255min)
Internal I/O	<ul style="list-style-type: none"> 4* USB2.0 (PH2.0) 16bit GPIO (5V) 3* COM (COM2 Support RS232/422/485) 1* HDMI 1* SATAIII (6Gb/s) 1* SATA Power 1* Chassis intrusion 1* LAN LED 1* FP_LED 1* FP_JW 1* SMBUS 1* AT model 1* DC Power Connector (12V DC-in) 1* PoE Power Connector (12V DC-in) 1* CPU FAN Header (Smart FAN)
External I/O	<ul style="list-style-type: none"> 2* USB3.2 (Gen.1) 1* Console (RS232) 6* 2.5GbE (LAN3/4/5/6: PoE PS Function) 2* LED (Power LED + HDD LED)
Power	12V DC-in, AT/ATX Supported - AT: Directly PWR on as Power input ready - ATX: Press Button to PWR on after Power input ready
Compliance	CE, FCC, LVD, RoHS, REACH (Option)
Temperature	<ul style="list-style-type: none"> Operating Temperature: -10 ~ 60° C Storage Temperature: -20 ~ 70° C Humidity: 10% ~ 90% RH @40°C (non-condensing)
OS Support	Windows 10/11, Linux
Warranty	<ul style="list-style-type: none"> 2 Years limited warranty

* Specifications subject to change without notice, not responsible for typographical errors. Does not include HDD or OS.

Standard Accessories

Part Number	Description
LI36 Series	LI36 Series M/B
F04-MB-064-F	1* IO Shield
G01-PWDCJK-2P20-F	1* DC-12V 2P Lock-to-DC-JACK L=200mm
G01-SATA3-BL-1F	1* SATA3 cable 50cm
G01-COM-H2M22-1F	1* COM9 cable 2*5P 1/2 K=9 L=220mm P=2.0



