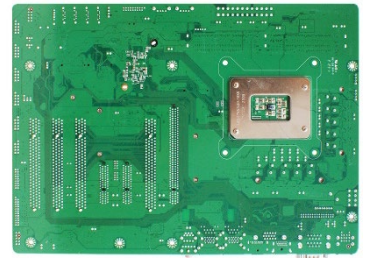
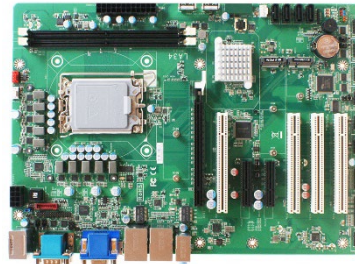


LA34-H6100 Series

305x220mm size with 14th/13th/12th Intel® Core™ i9/i7/ i5 /i3, Celeron & Pentium® LGA1700 Socket Processor, DDR5 up to 64GB, support 3 display

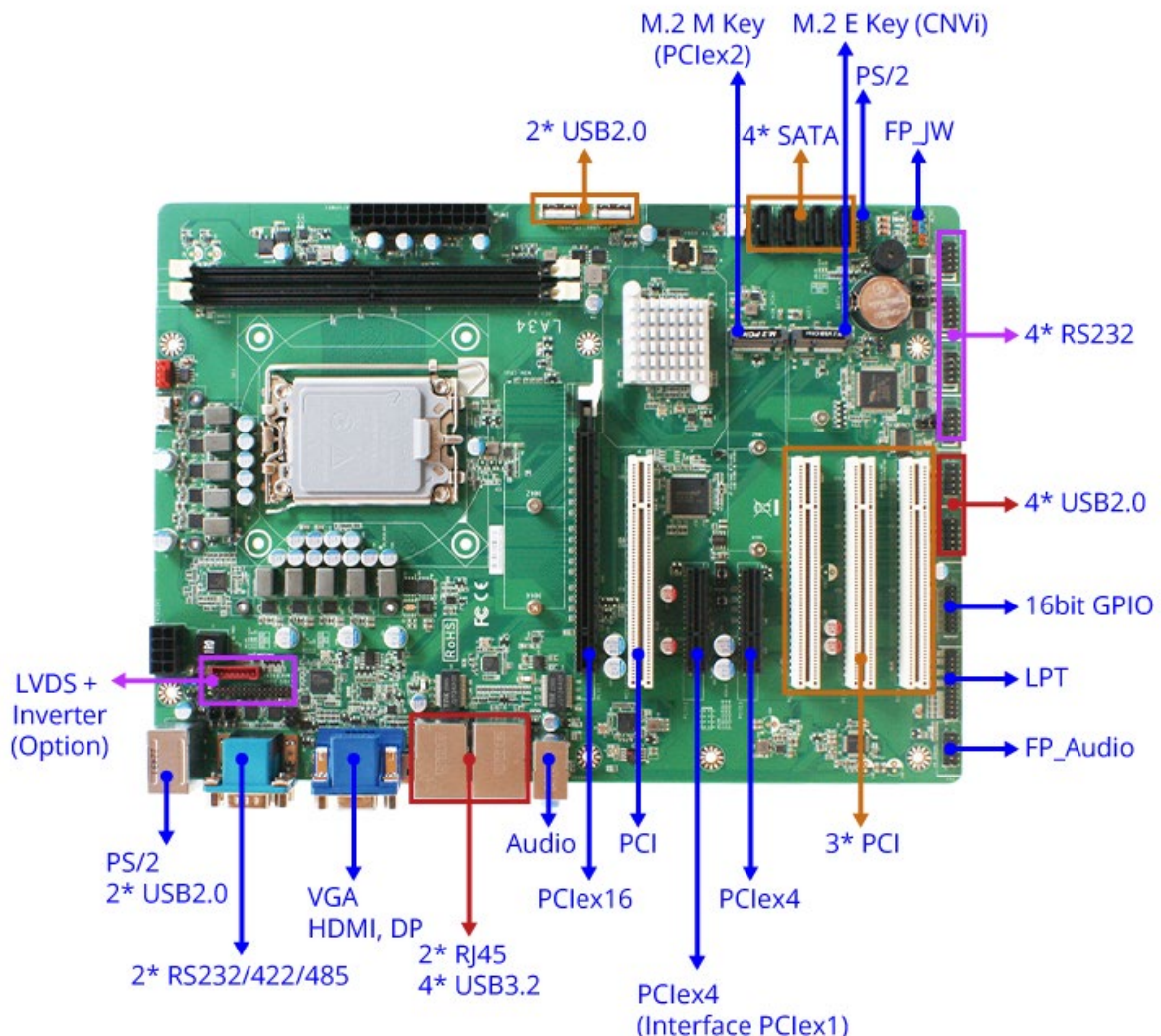
Features

1. Intel® 14th/13th/12th LGA1700 Socket Processor (Max.125W TDP)
2. Intel® Alder Lake-S H610/H610E Chip
3. 2* DDR5 4800MHz UDIMM up to 64GB
4. 1* VGA, 1* HDMI, 1* DP, 1* LVDS/EDP(Optional)
5. 1* 2.5GbE, 1* GbE
6. 6* COM, 4* USB3.2 (Gen.1), 6* USB2.0, 2* USB2.0 Type-A (Vertical)
7. 1* M.2 M-key (2280, NVMe, PCI-Ex2 Interface), 1* M.2 E-key (2230, CNVi Interface)
8. 1* PCI-Ex16 (Gen.4), 2* PCI-Ex4 (Gen.3), 4* PCI
9. Onboard TPM2.0(Optional)
10. ATX Power



intel. FC CE RoHS COMPLIANT

I/O Diagram



Specifications

Model	<ul style="list-style-type: none"> • LA34-H6100 • LA34-H6102(TMP2.0)
Form Factor	<ul style="list-style-type: none"> • ATX (305 * 220mm)
Processor System	<ul style="list-style-type: none"> • Intel® 14th/13th/12th LGA1700 Socket Core i9/i7/i5/i3/Pentium/Celeron Processor (Max. 125W TDP) • Intel® Alder lake-S H610/H610E chipset • AMI Flash ROM BIOS
Memory	<ul style="list-style-type: none"> • 2* DDR5 4800MHz Dual Channel UDIMM up to 64GB
Storage	<ul style="list-style-type: none"> • 4* SATAIII • 1* M.2 M-key (2242/2280 PCI-Ex2 Gen.3 interface)
Expansion	<ul style="list-style-type: none"> • 1* M.2 E-key (2230, USB2.0+CNVi interface) • 1* PCI-Ex16 (Gen.4) • 2* PCI-Ex4 (Gen.3, PCIE2 Interface: PCI-Ex1) • 4* PCI
Ethernet	<ul style="list-style-type: none"> • 1* Intel® I226-V 100/1000/2500Mbps • 1* Intel® I219-V 10/100/1000Mbps
Graphics	<ul style="list-style-type: none"> • Intel® HD Graphics, shared memory • 1* HDMI2.0 (Max Resolution: 4096x2304@60Hz) • 1* DP1.4 (Max Resolution: 7680x4320@60Hz) • 1* VGA (Max Resolution: 2560*1600@60Hz) • 1* LVDS/EDP (Max Resolution: 1920*1080@60Hz,Option) • Support Triple Displays
Audio	<ul style="list-style-type: none"> • HD audio: Realtek ALC897
Watchdog Timer	<ul style="list-style-type: none"> • From Super I/O to drag RESETCON# • 256 segments (10sec ~ 255min)
Internal I/O	<ul style="list-style-type: none"> • 4* USB2.0 (PH2.54) • 2* USB2.0 (Vertical) • 4* RS232 (COM3/4: 5/12V TTL) • 16bit GPIO (5V) Co-lay LPT • 1* LVDS/EDP + Inverter (Option for Factory) • 4* SATAIII • 1* 24+8pin Power connector • 1* Chassis intrusion • 1* FP_Audio • 1* PS/2 • 1* SMBUS • 1* AT model • 1* CPU FAN Header(Smart FAN) • 2* SYSTEM FAN Header
External I/O	<ul style="list-style-type: none"> • 4* USB3.2(Gen.1) • 2* USB2.0 • 1* VGA • 1* HDMI2.0 • 1* DP1.4 • 2* COM (RS232/422/485) • 2* RJ45 • 1* Audio (Line-in + Line-out + MIC)
Power	<p>ATX PWR(24+8pin), AT/ATX Supported</p> <ul style="list-style-type: none"> - AT: Directly PWR on as Power input ready - ATX: Press Button to PWR on after Power input ready
Compliance	CE, FCC, LVD, RoHS, REACH (Option)
Temperature	<ul style="list-style-type: none"> • Operating Temperature: 0 ~ 60° C • Storage Temperature: -20 ~ 70° C • Humidity: 10% ~ 90% RH @40°C (non-condensing)
OS Support	Windows 10/11, Linux
Warranty	<ul style="list-style-type: none"> • 2 Years limited warranty

* Specifications subject to change without notice, not responsible for typographical errors. Does not include HDD or OS.



Standard Accessories

Part Number	Description
LA34-H6100 Series	LA34-H6100 Series M/B
F04-MB-060-1F	1* IO Shield
G01-SATA3-BL-1F	2* SATA3 cable 50cm
G01-COM9X2-30A-1F	1* CABLE and COM9x2 K=10 30cm

Mechanical Drawings (Unit=mm)