

## JNP891 Series

*PICO-ITX size Embedded Motherboard with Intel® Gemini Lake-R Processor, DDR4 up to 8GB, support triple display*

1. Intel® Gemini Lake-R SoC Processor
2. 1 \* DDR4 2400MHz SO-DIMM up to 8 GB
3. Support 2 \* HDMI + 1 \* eDP
4. 1 \* COM, 2 \* USB3.0 & 2 \* USB2.0
5. 1 \* Mini-PCIe ,1 \* M.2 (M-key, 2242)
6. Support 1 \* SATA III (6Gb/s), onboard 32GB eMMC (JNP891G32-4125)
7. 12V DC-in



### Overview

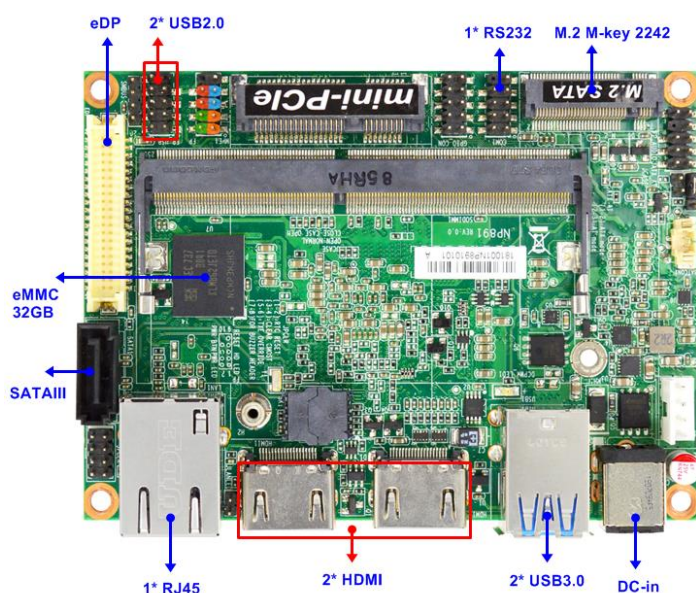
The JETWAY JNP891 Series adopts the Intel® Gemini Lake/Gemini Lake-R SoC processor. JNP891 Series equipped with DDR4 SO-DIMM slot and M.2 (M-key, 2242) which is suitable for most of the Digital Signage applications.

In addition, it offers flexible expansion with Mini-PCIe slot which can connect other add-on modules. JNP891 Series also has two USB 3.0, two USB 2.0, one RS232 port. Customers can connect different peripherals to meet their needs. JNP891 Series also support two HDMI and eDP triple display which can be used for Digital Signage needs. All of the JNP891 Series designs provide rich features with small dimension.

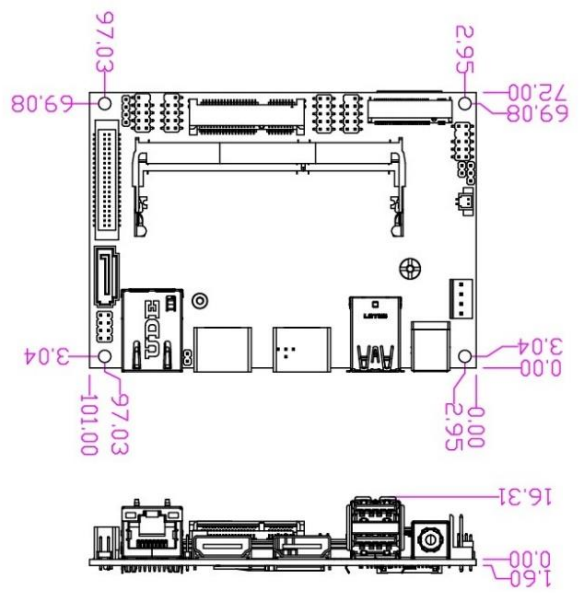
### Application

Digital Signage / Intelligent Home /IOT Solution

### I/O Diagram



### Mechanical Drawings (Unit = mm)



## Specifications

<b>Model</b>	<b>Form Factor</b>
JNP891-4125 JNP891G32-4125 (W/32GB eMMC)	2.5" (100 * 72mm)
<b>Processor System</b>	<b>Expansion Slot</b>
<ul style="list-style-type: none"><li>Intel® Gemini Lake-R J4125 SoC Processor</li><li>AMI Flash ROM BIOS</li></ul>	1* Mini PCIe (full size)
<b>Memory</b>	<b>Graphics</b>
1* SO-DIMM DDR4 2400MHz SDRAM up to 8GB	<ul style="list-style-type: none"><li>Intel® HD Graphics, shared memory</li><li>1* eDP (Max Resolution: 4096x2304@60Hz)</li><li>2* HDMI 2.0 (Max Resolution: 4096x2160@60Hz)</li><li>Support Triple Displays</li></ul>
<b>Ethernet</b>	<b>Audio</b>
1* Realtek RTL8111H GbE	HD audio: Realtek ALC888S-VD2
<b>Storage</b>	<b>Rear I/O</b>
<ul style="list-style-type: none"><li>1* SATAIII (6 Gb/s)</li><li>1* M.2 M-key (2242 W/ SATA interface)</li><li>32GB eMMC on board (JNP891G32-4125)</li></ul>	<ul style="list-style-type: none"><li>2* USB3.0</li><li>2* HDMI</li><li>1* Ethernet</li><li>12V DC-in</li></ul>
<b>Internal I/O</b>	<b>Watchdog Timer</b>
<ul style="list-style-type: none"><li>2* USB2.0</li><li>1* eDP</li><li>1* COM (RS232)</li><li>1* SATAIII</li><li>1* Mini-PCIe (full size)</li><li>1* SIM card slot</li><li>1 * 32GB eMMC (JNP891G32-4125) (If use Win 10 OS, we recommend the eMMC is use for OS boot up purpose.)</li><li>1* GPIO (8 bit)</li><li>1* Chassis intrusion</li><li>1* Audio Header</li><li>1* SMBUS</li><li>1* AT mode</li></ul>	<ul style="list-style-type: none"><li>From Super I/O to drag RESETCON#</li><li>256 segments (10sec ~ 255min)</li></ul>
<b>Power</b>	<b>Compliance</b>
12V DC-in - AT: Directly PWR on as Power input ready - ATX: Press Button to PWR on after Power input ready	CE, FCC, LVD, RoHS, REACH
<b>Temperature</b>	<b>Warranty</b>
<ul style="list-style-type: none"><li>Operating: 0°C ~ 50°C</li><li>Storage: -20°C ~ 85°C</li></ul>	2 Years Limited Warranty

\* Specifications subject to change without notice, not responsible for typographical errors. Does not include HDD or OS.

## Accessories

Parts Number	Description	Parts Number	Description
-----	JNP891 Series M/B		