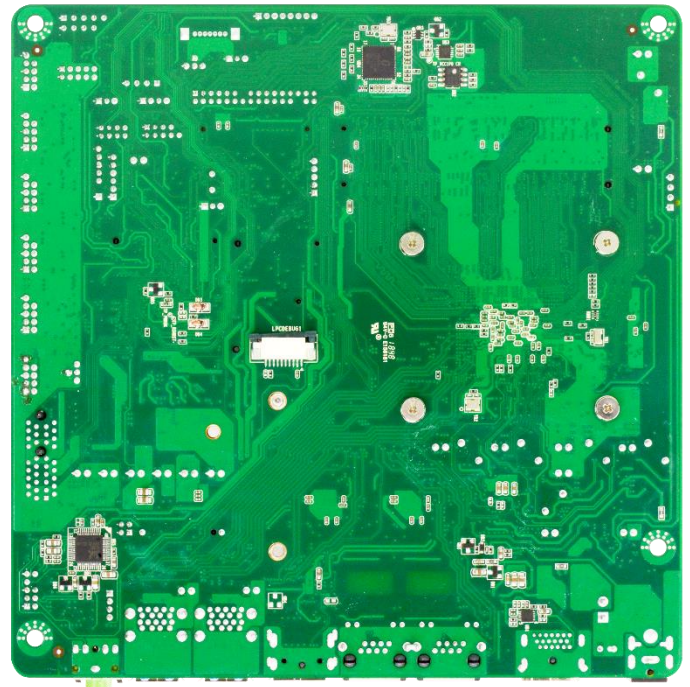
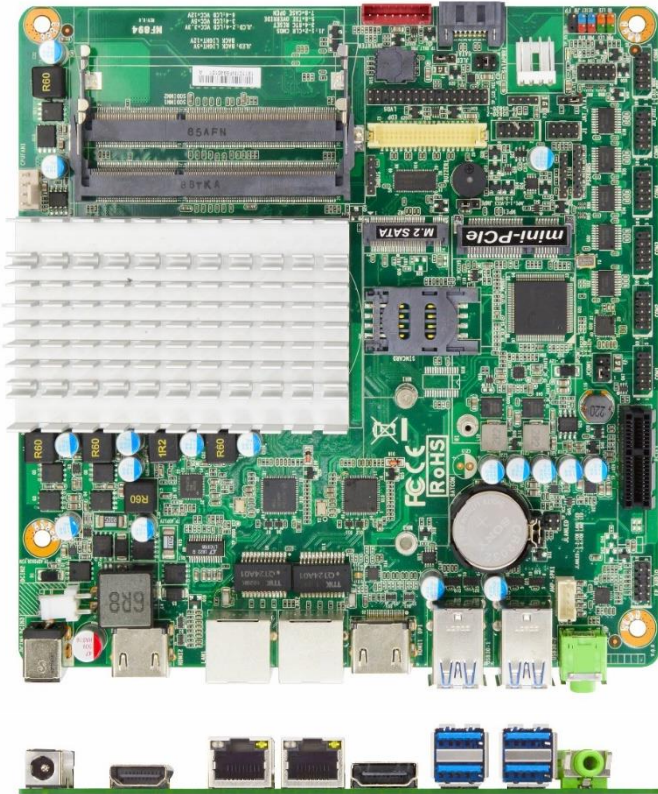




JNF894 Series

Slim Mini-ITX Embedded Motherboard with Intel® Apollo Lake SoC Processor, DDR3L up to 8GB, 9~36V wide voltage solution



Overview



The JETWAY JNF894 Series is Slim Mini-ITX form factor board adopts the Intel® Apollo Lake SoC Processor. The board supports DDR3L 1866Mhz SO-DIMM memory, up to 8GB. Featuring the integrated two Intel Gigabit Ethernet controllers, the JNF894 offers 10/100/1000Base-TX Ethernet devices for network transmission. SATAIII (6Gb/s) interface, one M.2 (M-key, 2242/2280) and 32GB eMMC (option) offer storage devices. One Mini PCIe interface, four USB3.0 ports, three USB2.0 ports and six COM ports provide versatile expansion. The JNF894 offers two HDMI interface which can support max. 3840x2160@30Hz resolution. Because of the above features, JNF894 is one of the best selections for industrial automation and industrial PPC applications.

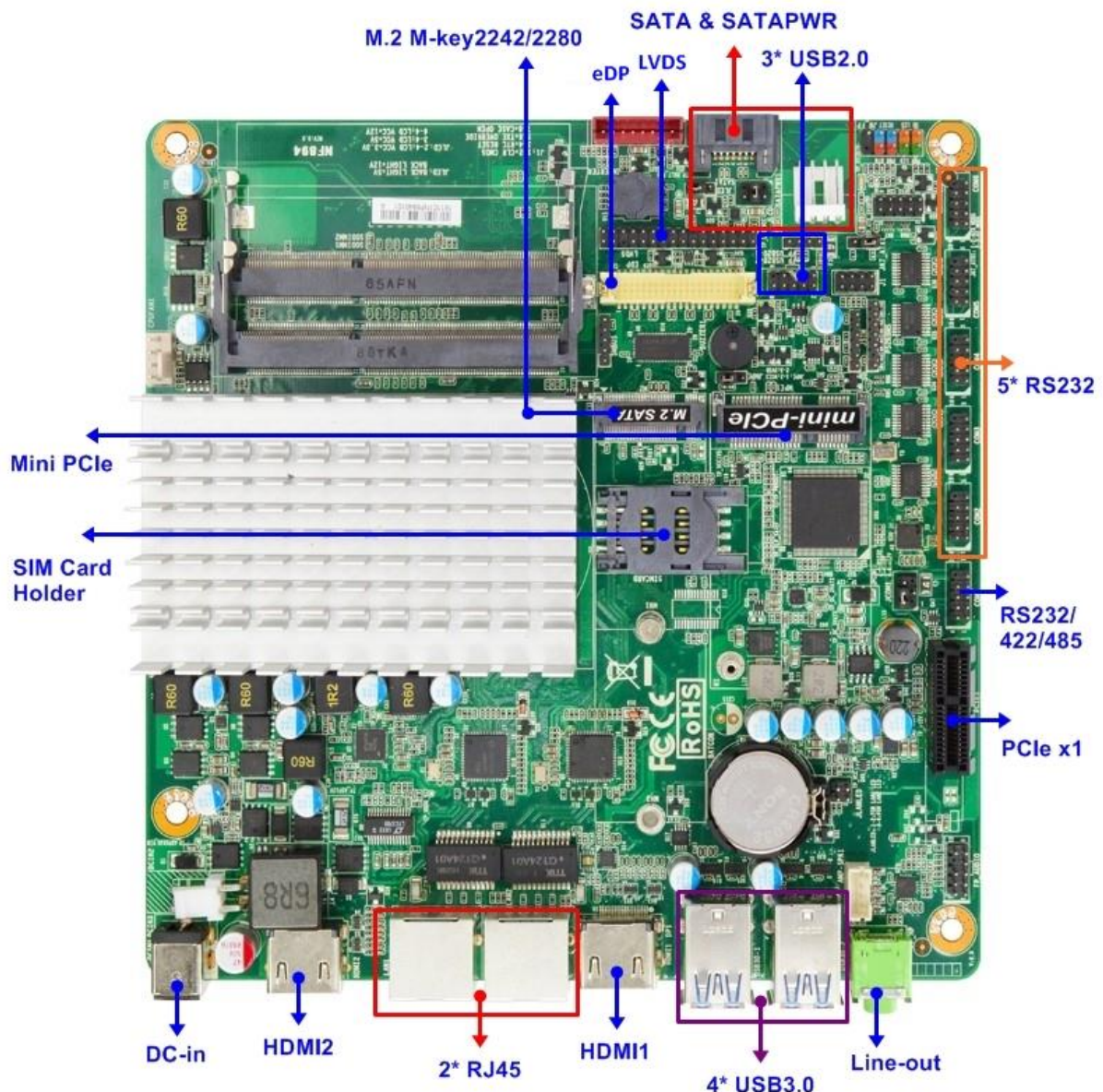
Features

1. Intel® Apollo Lake SoC Processor (Default J3455)
2. 2 * DDR3L SO-DIMM up to 8GB
3. 2 * 10/100/1000 Base-TX Ethernet Ports
4. Support 2 * HDMI + 1 * eDP + 1 * LVDS display
5. 6 * COM, 4 * USB3.0 & 3 * USB2.0
6. 1 * PCIe x1 slot, 1* Mini PCIe slot (1* full size),
1 * M.2 (M-key, 2242/2280)
7. Support 1 * SATAIII (6Gb/s), 32GB eMMC (option)
8. 9~36V DC-in

Application

- Industrial Automation
- Industrial Panel PC
- KIOSK
- Digital Signage

Internal Diagram



Specifications

Model	
Model	- JNF894-3455 (Default) - JNF894G32-3455
Part Number	- JNF894-3455 (Default) - JNF894G32-3455 (32GB eMMC onboard)
Form Factor	
Dimensions	- Slim Mini-ITX (6.7-in * 6.7-in, 170 * 170mm)
Processor System	
CPU	- Intel Apollo Lake SoC Processor (Default J3455)
Core Number	- 4
Max Speed	- 2.30GHz
L2 Cache	- 2M
Chipset	- SoC
BIOS	- AMI Flash ROM
Expansion Slot	
Mini-PCle	- 1 (full size)
PCle	- 1 * PCle x1
M.2	- 1 (M-key, 2242/2280)
SIM Card Holder	- 1
Memory	
Technology	- Dual CH DDR3L 1866MHz SDRAM
Max.	- 8GB
Socket	- 2 * SO-DIMM
Graphics	
Controller	- Intel® HD Graphics
VRAM	- Shared Memory
LVDS	- 1 (Max. 1920 x 1080@60Hz resolution) (Selectable with eDP, not working while using LVDS)
eDP 1.3	- 1 (Max. 4096 x 2160@60Hz resolution) (Selectable with LVDS, not working while using eDP)
HDMI 1.4	- 2 (Max. Resolution: 3840 x 2160@30Hz) (one option with DP, Default HDMI)
DisplayPort 1.2	- 1 (Max. Resolution: 4096 x 2160@60Hz) (option with HDMI)
Multi Display	- Triple Displays
Ethernet	
Ethernet	- 10/100/1000 Mbps
Controller	- Intel i211-AT GbE

Connector	- 2 * RJ45
Audio	
CODEC	- HD Audio: Realtek ALC662VD
Channel	- 2 Channel
STORAGE	
SATA	- 1 * SATAIII (6.0Gb/s)
eMMC	- 32GB (option. If use Win 10 OS, we recommend the eMMC is use for OS boot up purpose)
M.2	- 1 (M-key, 2242/2280) for SATA interface
Rear I/O	
HDMI	- 2 (default)
DisplayPort	- 1 (option with one HDMI)
Ethernet	- 2
USB	- 4 * USB 3.0
Audio	- 1 (Line-out)
DC-input	- 1
Internal Connector	
USB	- 3 * USB 2.0
PS/2	- 1
LVDS / inverter	- 1
eDP	- 1
Serial	- 6 (COM1 support RS232/422/485 w/ power)
SATA	- 1 * SATAIII (6.0Gb/s)
mPCIe	- 1 (full size)
M.2	- 1 (M-key, 2242/2280)
GPIO	- 1 (8 bit)
Chassis intrusion	- 1
Audio Header	- 1
SMBUS / I2C	- 1
AT mode	- 1
TPM	- 1 (onboard option)
Watchdog Timer	
Output	- From Super I/O to drag RESETCON#
Interval	- 256 segments, 10sec...255min
Power Requirements	
Input PWR	- 9~36V DC-in

Power On	AT/ATX Supported - AT: Directly PWR on as Power input ready - ATX: Press Button to PWR on after Power input ready
Certifications	
Certifications	- CE, FCC, RoHS, REACH
Environment	
Temperature	- Operating: 0°C ~ 60°C (with 0.7m/s air flow)
	- Storage: -20°C ~ 85°C
	- eMMC: 0°C ~ 70°C
Warranty	
Warranty	- 2 Years Limited Warranty

*Specifications subject to change without notice, not responsible for typographical errors. Does not include HDD or OS.

Accessories

Part Number	Description
	JNF894 Series M/B
F04-MB-069-F	I/O Shield
G01-COM-H2M22-1F	COM Cable

Mechanical Drawings (Unit = mm)

