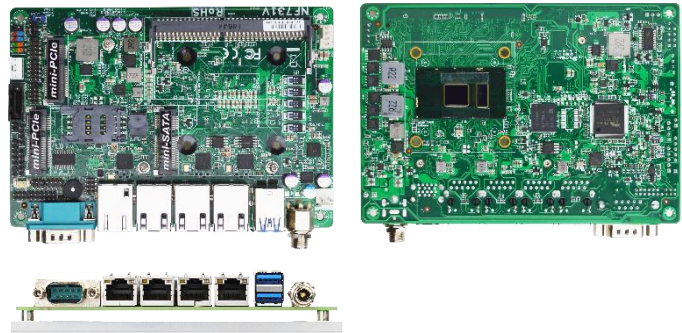


# JNF731V Series

4 LAN Ports Networking Appliance Motherboard with Intel® Skylake/Kabylake U-series SoC Processor

## Features

1. Intel® Skylake/Kabylake U-series Processor (TDP 15W)
2. 1\* 260-pin DDR4 2133MHz SODIMM Up to 16 GB
3. 3\* Intel i225V 2.5GbE, 1\* Intel i219LM GbE
4. Support Intel AES NI and TPM (option) to secure customers' data
5. 1\* RS232 Console, 2 \* USB3.0 & 3 \* USB2.0, 1 \* HDMI
6. 2\* Mini PCIe Slots (1\* full size & 1\* half size), 1 \* SIM card holder
7. 12V DC-in power



## Overview

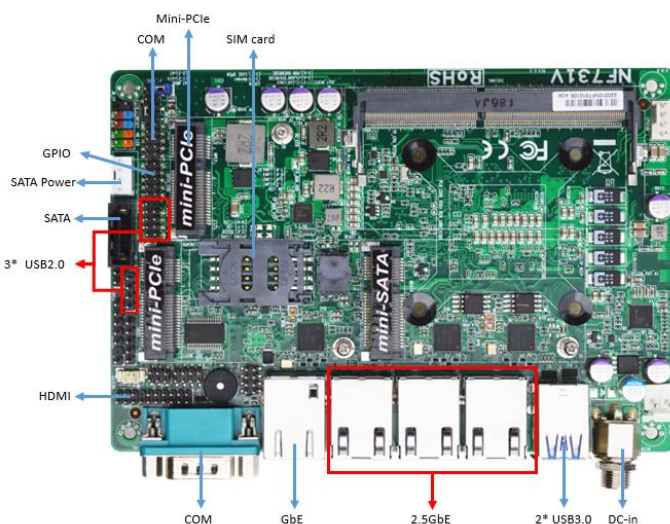
The JETWAY JNF731V Series adopts the Intel® Skylake/Kabylake U-series SoC processor. The system memory features one 260-pin DDR4 2133MHz SODIMM up to 16GB. It is equipped with three 2.5 Gigabit and one Gigabit Ethernet LAN ports and suitable for networking environment. Intel® Skylake/Kabylake U-series processor support AES NI which is a new encryption instruction to improve on the AES algorithm and accelerate the encryption of data. JNF731V also supports TPM feature to secure customers' data.

In addition, it offers flexible expansion with network products and features two Mini PCIe slots, two USB 3.0 ports, and one RS232 console port. Expansion opportunities are available with 2 Mini PCIe slots and 1 SIM card holder enabling the addition of Wi-Fi, 3G, 4G LTE for multiple connectivity. In addition, an internal Mini-SATA slot and SATAIII connector for a 2.5" device provides storage selection. The console port deploys console re-direction that increases network security via remote control. JNF731V is equipped with TVS, voltage, current, and ESD protection. All of these designs provide for a more user-friendly solution.

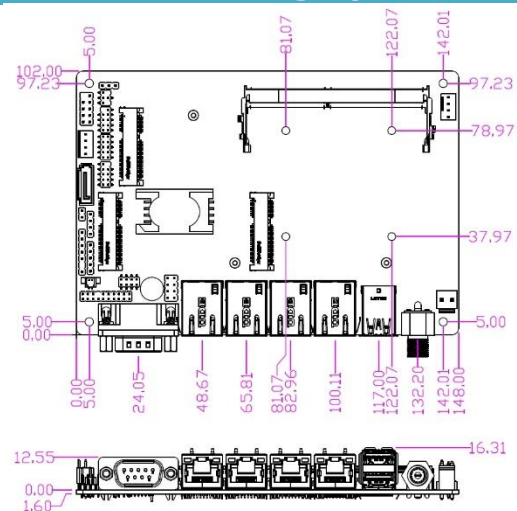
## Application

IDP/IPS / Firewall / Load Balancing / Bandwidth Manager / Web Filter / Anti-Spam/Virus / Network Access Control

## I/O Diagram



## Mechanical Drawings (Unit=mm)



## Specifications

### Model

JNF731V-3955U (Default)  
JNF731V-3965U

### Processor System

- Intel® Skylake/Kabylake U-series Processor (TDP 15W)
- AMI Flash ROM BIOS

### Storage

- 1\* SATAIII (6 Gb/s)
- 1\* mSATA (SATA/USB signal)

### Ethernet

3\* Intel i225V 2.5GbE  
1\* Intel i219LM GbE

### Internal I/O

- 3\* USB2.0
- 1\* SATAIII
- 1 \* 32GB eMMC (option)  
(If use Win 10 OS, we recommend the eMMC is use for OS boot up purpose.)
- 1\* PS/2
- 1\* HDMI
- 1\* RS232/422/485
- 1\* Chassis intrusion
- 1\* GPIO
- 1\* SMBUS
- 1\* AT mode
- 1\* TPM (on board option)

### Power

12V DC-in PWR  
- AT: Directly PWR on as Power input ready  
- ATX: Press Button to PWR on after Power input ready

### Temperature

- Operating Temperature: 0 ~ 60° C
- Storage Temperature: -20 ~ 85° C
- Humidity: 10% ~ 90% RH @40°C (non-condensing)

### Warranty

2 Years limited warranty

### Form Factor

3.5" (5.8-in \* 4.0-in, 148 \* 102mm)

### Memory

1\* DDR4 2133MHz SO-DIMM up to 16GB

### Expansion

- 1\* Full size Mini-PCIe
- 1\* Half size Mini-PCIe
- 1\* SIM card holder

### Graphics

- Intel® HD Graphics, shared memory
- 1\* HDMI 1.4 (Max Resolution: 4096x2304@24Hz)

### External I/O

#### Rear:

- 2\* USB3.0
- 4\* RJ45
- 1\* COM
- 12V DC-in

### Watchdog Timer

- From Super I/O to drag RESETCON#
- 256 segments (10sec ~ 255min)

### Compliance

CE, FCC, RoHS, REACH

### OS Support

Windows, Linux

\* Specifications subject to change without notice, not responsible for typographical errors. Does not include HDD or OS.

## Standard Accessories

Part Number	Description
	JNF731V Series M/B
1* J2NF533FPIOR10	
1* G01-2X4A-18K0-F	LAN LED card
1* G01-2X4-18K0-F	
G01-COM-H2M20-1F	1* COM cable
G01-SATA3-BL-1F	1* SATA cable
G01-PW4PS2S-322-1F	1* SATA Power cable
G01-USB2X5A-28-F	1* USB cable
G01-2X10A-HDMI-F	1* 2*10pin HSG to HDMI cable
HCS3XXMHT03S-1F	1* Flat type Heatsink