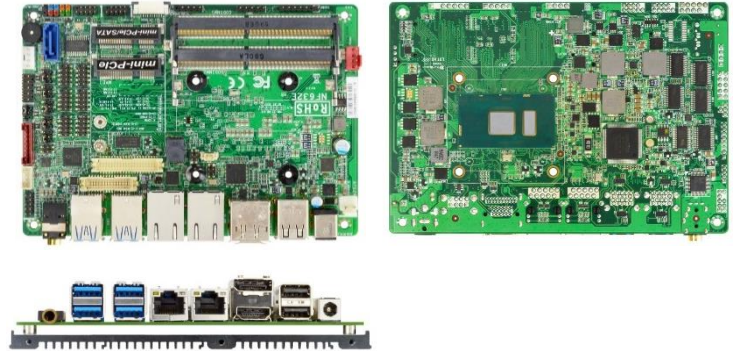


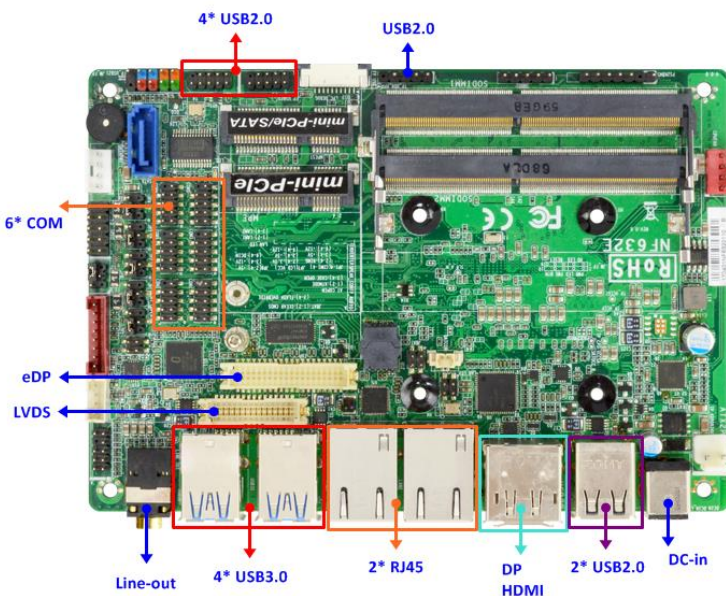
## JNF632N Series

*Intel® Skylake-U/Kabylake-U SoC CPU, DDR4 up to 32GB, support 4K display resolution, Support Wide Voltage 9~24V DC-in*

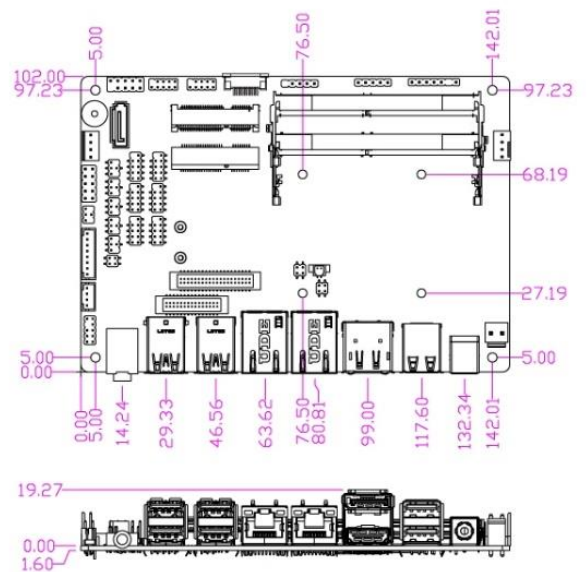
1. Intel® Skylake-U/ Kabylake-U SoC Processor (Default: i5-7300U, TDP 15W)
2. 2\* DDR4 SO-DIMM slot up to 32GB
3. Support DP, HDMI, eDP/LVDS (triple display)
4. Realtek ALC888S Audio CODEC
5. 1\* SATAIII, 1\* mSATA (shared with mPCIe), 1\* full size mPCIe (shared with mSATA), 1\* half size mPCIe
6. 5\* Internal RS232, 1\* Internal RS232/422/485, 4\* External USB3.0, 2\* External USB1.1/2.0, 5\* Internal USB1.1/2.0, 2\* GbE
7. Support Wide Voltage 9~24V DC-in



### I/O Diagram



### Mechanical Drawings (Unit = mm)



## Specifications

<b>Model</b>	<b>Form Factor</b>
<ul style="list-style-type: none"><li>JNF632N-3955U</li><li>JNF632N-7200U</li><li>JNF632N-7300U (Default)</li></ul>	3.5" SBC (148 * 102mm)
<b>Processor System</b>	<b>Expansion Slot</b>
<ul style="list-style-type: none"><li>Intel® Skylake-U/Kabylake-U SoC Processor (TDP 15W)</li><li>Intel 7300U SoC chipset</li><li>AMI 128Mb SMT Flash ROM BIOS</li></ul>	<ul style="list-style-type: none"><li>2* Mini PCIe (1* full size, shared with mSATA, 1* half size)</li><li>1* mSATA (full size, shared with mPCIe)</li></ul>
<b>Memory</b>	<b>Graphics</b>
2* Dual CH DDR4 2133MHz SDRAM SO-DIMM up to 32GB	<ul style="list-style-type: none"><li>Intel® HD Graphics, shared memory</li><li>1* LVDS (Max. 1920 x 1200@60Hz resolution) (Selectable with eDP, not working while using LVDS)</li><li>1* eDP1.3 (Max. 4096 x 2304@60Hz resolution) (Selectable with LVDS, not working while using eDP)</li><li>1* HDMI1.4 (Max. 4096 x 2160@24Hz resolution)</li><li>1* DP1.2 (Max. 4096 x 2304@60Hz resolution)</li><li>Support Triple Displays</li></ul>
<b>Ethernet</b>	<b>Audio</b>
<ul style="list-style-type: none"><li>1* Intel® i219LM GbE</li><li>1* Intel® i211AT GbE</li></ul>	2 channel HD audio: Realtek ALC888S
<b>SATA</b>	<b>Rear I/O</b>
1* SATAIII (6.0Gb/s)	<ul style="list-style-type: none"><li>1* HDMI</li><li>1* DP</li><li>2* RJ45</li><li>4* USB3.0</li><li>2* USB2.0</li><li>Line-out</li><li>DC-in</li></ul>
<b>Internal Connector</b>	<b>Watchdog Timer</b>
<ul style="list-style-type: none"><li>5* USB 2.0</li><li>1* PS/2</li><li>1* LVDS (Selectable with eDP, not working while using LVDS)</li><li>1* eDP (Selectable with LVDS, not working while using eDP)</li><li>5* RS232</li><li>1* RS232/422/485</li><li>1* SATAIII (6.0Gb/s)</li><li>1* Mini PCIe (full size, shared with mSATA), 1 (half size)</li><li>1* mSATA (shared with mPCIe)</li><li>1* GPIO (8 bit)</li><li>1* Chassis intrusion</li><li>1* Audio Header</li><li>1* SMBUS/ I2C</li><li>Support onboard TPM2.0 (option)</li></ul>	<ul style="list-style-type: none"><li>From Super I/O to drag RESETCON#</li><li>256 segments (10sec ~ 255min)</li></ul>
<b>Power</b>	<b>Compliance</b>
DC-in 9~24V, ATX Supported - ATX: Press Button to PWR on after Power input ready	CE, FCC, RoHS, REACH
<b>Temperature</b>	<b>OS Support</b>
<ul style="list-style-type: none"><li>Operating: 0°C ~ 60°C</li><li>Storage: -20°C ~ 85°C</li><li>Humidity: 10% ~ 90% RH @40°C (non-condensing)</li></ul>	Windows 7, 8, 10, Linux
<b>Warranty</b>	
2 Years Limited Warranty	

\* Specifications subject to change without notice, not responsible for typographical errors. Does not include HDD or OS.

## Standard Accessories

Parts Number	Description	Parts Number	Description
-----	JNF632N Series M/B	G01-SATA3-BL-1F	1* SATA cable
G01-COM-H2M20-1F	2* COM cable	G01-PW4PS2S-322-1F	1* SATA Power cable
HCS366MHT01B-F	1* Black Fin type Heatsink		