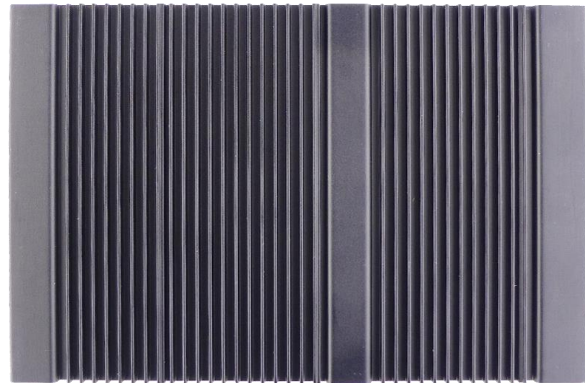
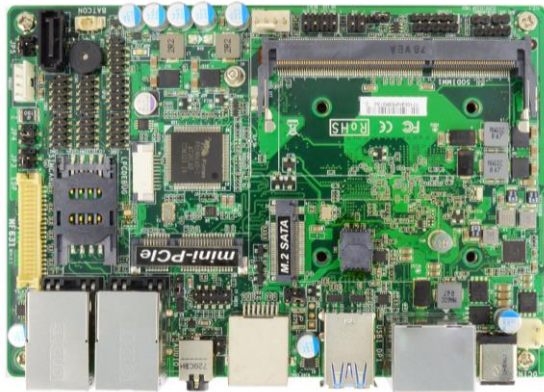


JNF631 Series

**Intel® Apollo-Lake SoC CPU, DDR3L up to 8GB, support
Max. 4K display resolution**



Overview

The JETWAY JNF631 series are 3.5" form factor board adopts the Intel® Apollo Lake SoC Processor. The board supports one 204-pins SO-DIMM DDR3L memory, up to 8GB. Featuring the integrated Intel® i211AT Gigabit Ethernet controller for Gigabit Ethernet connection, the JNF631 offers two 10/100/1000Base-TX Ethernet devices for network transmission. One SATAIII (6Gb/s) interface, micro SD socket and one M.2 (M-key, 2242) interface offer ample storage options. One Mini PCIe interface and SIM card holder are for 3G/LTE connection. Four USB3.0 ports, two USB2.0 ports and six COM ports provide versatile expansion. The JNF631 offers two DP and one eDP ports which can support triple independent output and display up to 4Kx2K@60Hz resolution. Because of these features, NF631 is suitable for digital signage or kiosk or industry use.

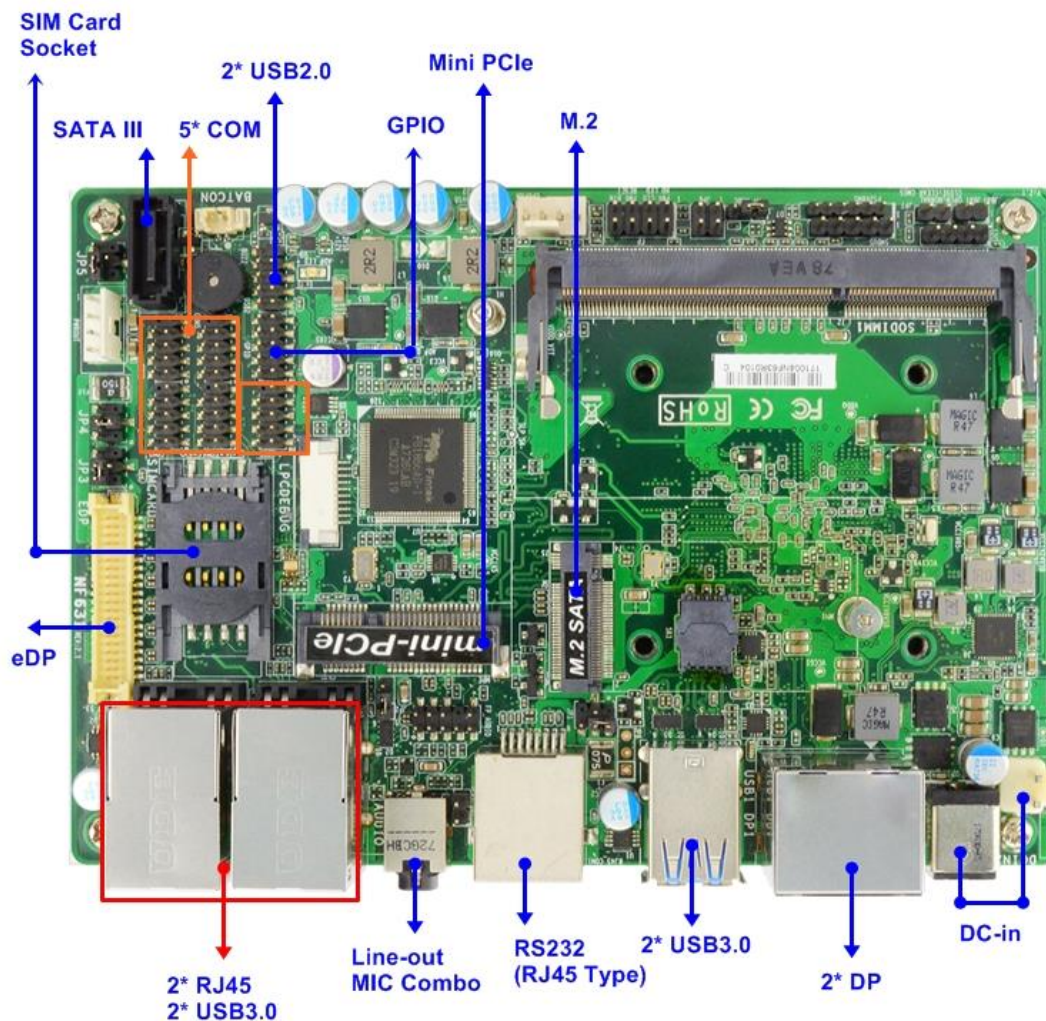
Features

1. Intel® Apollo Lake Series Processor (Default: J3455)
2. Support 1 * DDR3L SO-DIMM, up to 8GB
3. Support 2 * Display Port & 1 * eDP port
4. Support Triple Display, max 4K@60Hz resolution
5. 1 * External RS232(RJ45 Type) & 5 * Internal COM (COM 2 support RS232/422/485)
6. 4 * External USB3.0 & 2 * Internal USB2.0
7. 1 * Full size Mini PCIe, 1 * M.2 SATA interface
8. SIM card holder & Micro SD socket

Application

- Digital Signage
- Kiosk
- Industry Use
- Auto Control

Internal Diagram



Specifications

Model	
Model	- NF631-3350 - NF631-3455 (Default)
Part Number	- JNF631-3350 - JNF631-3455 (Default)
Form Factor	
Dimensions	- 3.5" (5.8-in * 4.0-in, 148 * 102mm)
Processor System	
CPU	- Intel® Apollo Lake SoC Processor, Default: J3455
Core Number	- (by CPU)
Max Speed	- (by CPU)
L2 Cache	- (by CPU)
Chipset	- SoC
BIOS	- AMI Flash ROM
Expansion Slot	
Mini-PCIe	- 1 (full size)
M.2	- 1 (M-key, 2242)
SIM Card Holder	- 1
Memory	
Technology	- DDR3L 1866MHz SDRAM
Max.	- 8GB
Socket	- 1 * SO-DIMM
Graphics	
Controller	- Intel® HD Graphics
VRAM	- Shared Memory
eDP 1.3	- 1 (Max. Resolution: 4096 * 2160@60Hz)
DisplayPort	- 2 (Max. Resolution: 4096*2160@60Hz)
MultiDisplay	- Triple Display
Ethernet	
Ethernet	- 10/100/1000 Mbps
Controller	- Intel i211AT GbE
Connector	- 2 * RJ45
Audio	
CODEC	- HD Audio: Realtek ALC662
Channel	- 2 Channel (combo Line Out + Mic)
SATA	

Max Data Transfer Rate	- 1 * SATAIII (6.0Gb/s)
Rear I/O	
DisplayPort	- 2
Ethernet	- 2
USB	- 4 * USB 3.0
Audio	- 1 (Line out + MIC combo)
Serial / Parallel	- 1 (RJ45 type) / 0
DC-input	- 1
Internal Connector	
USB	- 2 * USB 2.0
PS/2	- 1
eDP	- 1
Serial	- 5 (4 * RS232, COM 2 support RS232/422/485)
SATA	- 1 * SATAIII (6.0Gb/s)
mPCIe	- 1 (full size)
M.2	- 1 (M-key, 2242)
GPIO	- 1 (8 bit)
Chassis intrusion	- 1
Audio Header	- 1
SMBUS/ I2C	- 1
AT mode	- 1
Others	- 1 * Micro SD card slot
Watchdog Timer	
Output	- From Super I/O to drag RESETCON#
Interval	- 256 segments (10sec ~ 255min)
Power Requirements	
Input PWR	- 12V DC IN
Power On	AT/ATX Supported - AT: Directly PWR on as Power input ready - ATX: Press Button to PWR on after Power input ready
Certifications	
Certifications	- CE, FCC, RoHS, REACH
Environment	
Temperature	- Operating: 0°C ~ 60°C
	- Storage: -20°C ~ 85°C
Warranty	
Warranty	- 2 Years Limited Warranty

*Specifications subject to change without notice, not responsible for typographical errors. Does not include HDD or OS.

Accessories

Part Number	Description
	JNF631 Series M/B
G01-SATA3-BL-1F	SATA cable
G01-PW4PS-2S-323F	SATA Power cable

Mechanical Drawings (Unit = mm)

