

JNC9AMXM-H310

Intel® Coffee Lake-S H310 Chip, support LGA1151 CPU, DDR4 up to 32GB, 12~36V DC-in

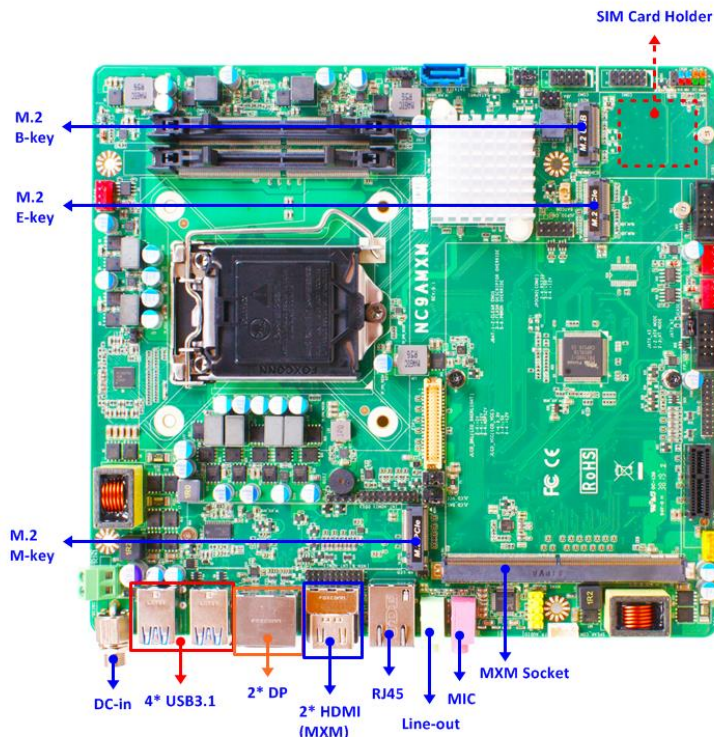
1. Intel® LGA1151 Socket Core I3,I5,I7 Pentium Processor
2. Intel® Coffee Lake-S H310 Chip
3. Support Dual Channel DDR4 2133MHz SO-DIMM up to 32GB
4. Support 1* MXM VGA Card Socket (MXM:90W)
5. 1* SATA III (6Gb/s), 1* PCI-E x1, M.2 M-key (2280, SATA interface) support NVMe, 1* M.2 E-key (2230, PCIe x1) support CNVi, 1* M.2 B-key (3042) support 3G/4G Module
6. 1* Intel® I219LM GbE, 2* RS232 (COM2 Support 5V/12V TTL), 4* External USB3.1, 4* Internal USB2.0
7. 12 ~ 36V DC-in
8. Form Factor: 220 *200mm



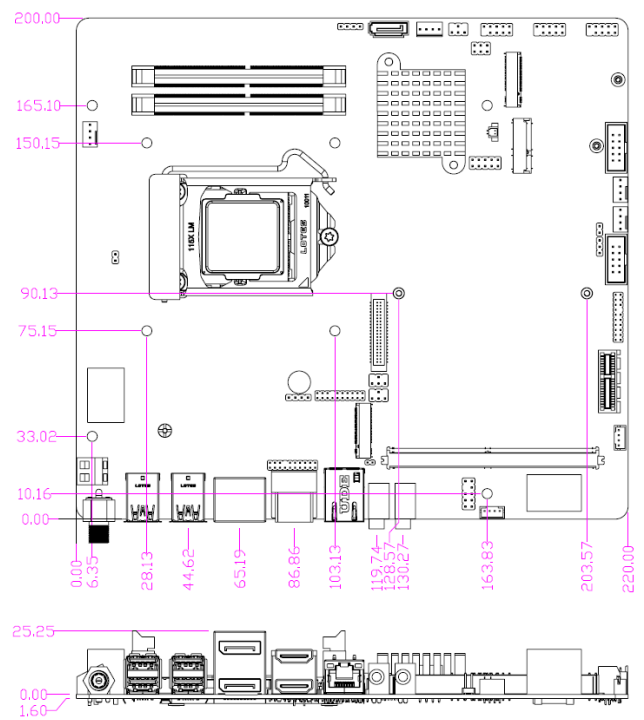
Application

Multimedia / Autopilot

I/O Diagram



Mechanical Drawings (Unit = mm)



Specifications

| | | | | | |
|---|---|-------------------|-------------------|--|--|
| Model | Form Factor | | | | |
| JNC9AMXM-H310 | SBC (220 * 220mm) | | | | |
| Processor System | Expansion Slot | | | | |
| <ul style="list-style-type: none">Intel® LGA1151 Coffee Lake Series Processor (Max 90W)H310 /Q370 chipsetAMI 128M Flash ROM BIOS | <ul style="list-style-type: none">1* M.2 M-key (2280, SATA) support NVMe1* M.2 E-key (2230, PCIe x1) support CNVi1* M.2 B-key (3042) support 3G/4G Module1* SATA1* PCIe x1 slot1* MXM Card Socket (Max: 90W)1* SIM Card holder | | | | |
| Memory | Graphics | | | | |
| 2* SO-DIMM DDR4 2400MHz SO-DIMM Dual CH up to 32GB | <table><tr><td>Graphics 1</td><td>Graphics 2</td></tr><tr><td><ul style="list-style-type: none">Intel® HD Graphics, shared memory1* eDP 1.2 (Max Resolution : 4096x2304@60Hz, by CPU)1* DP (Max Resolution : 4096x2304@60Hz, by CPU)1* HDMI (Max Resolution : 4096x2160@30Hz, by CPU)</td><td><ul style="list-style-type: none">1* DP, by MXM VGA Card3* HDMI, by MXM VGA CardSupport 6 Displays</td></tr></table> | Graphics 1 | Graphics 2 | <ul style="list-style-type: none">Intel® HD Graphics, shared memory1* eDP 1.2 (Max Resolution : 4096x2304@60Hz, by CPU)1* DP (Max Resolution : 4096x2304@60Hz, by CPU)1* HDMI (Max Resolution : 4096x2160@30Hz, by CPU) | <ul style="list-style-type: none">1* DP, by MXM VGA Card3* HDMI, by MXM VGA CardSupport 6 Displays |
| Graphics 1 | Graphics 2 | | | | |
| <ul style="list-style-type: none">Intel® HD Graphics, shared memory1* eDP 1.2 (Max Resolution : 4096x2304@60Hz, by CPU)1* DP (Max Resolution : 4096x2304@60Hz, by CPU)1* HDMI (Max Resolution : 4096x2160@30Hz, by CPU) | <ul style="list-style-type: none">1* DP, by MXM VGA Card3* HDMI, by MXM VGA CardSupport 6 Displays | | | | |
| Ethernet | Audio | | | | |
| 1* Intel® I219LM GbE | <ul style="list-style-type: none">HD audio: Realtek ALC662VD1* Line-out, 1* MIC | | | | |
| SATA | Rear I/O | | | | |
| 1* SATAIII (6.0Gb/s) | <ul style="list-style-type: none">2* HDMI2* DP1* RJ454* USB3.1Line-Out, MIC9~36 V DC-in | | | | |
| Internal Connector | Watchdog Timer | | | | |
| <ul style="list-style-type: none">4* USB 2.01* eDP3* HDMI2* COM (COM2 support 5V/12V TTL)1* SATAIII (6.0Gb/s)3* M.2 (M key, E key, B key)1* 8bit GPIO1* Chassis intrusion1* Audio Header1* 3W AMP Speaker1* SMBUS/ I2C1* AT mode | <ul style="list-style-type: none">From Super I/O to drag RESETCON#256 segments (10sec ~ 255min) | | | | |
| Power | Compliance | | | | |
| <ul style="list-style-type: none">12~36V DC-inAT/ATX Supported- AT : Directly PWR on as Power input ready- ATX: Press Button to PWR on after Power input ready | CE, FCC, RoHS, REACH | | | | |
| Temperature | Warranty | | | | |
| <ul style="list-style-type: none">Operating: 0°C ~ 60°CStorage: -20°C ~ 85°CHumidity : 10% ~ 90% RH @40°C (non-condensing) | 2 Years Limited Warranty | | | | |

* Specifications subject to change without notice, not responsible for typographical errors. Does not include HDD or OS.

Standard Accessories

| Parts Number | Description | Parts Number | Description |
|------------------|--|------------------|-----------------------------|
| ----- | JNC9AMXM-H310 M/B | G01-PW4PS-SA15-F | 1* SATA Power Cable L=350mm |
| G01-SATA3-BL-1F | 1* SATA3 Cable 50cm Blue w/LOCK | | |
| G01-COM-H2M22-1F | 2* COM Cable CNN-2mm Head L=220mm K=10 | | |