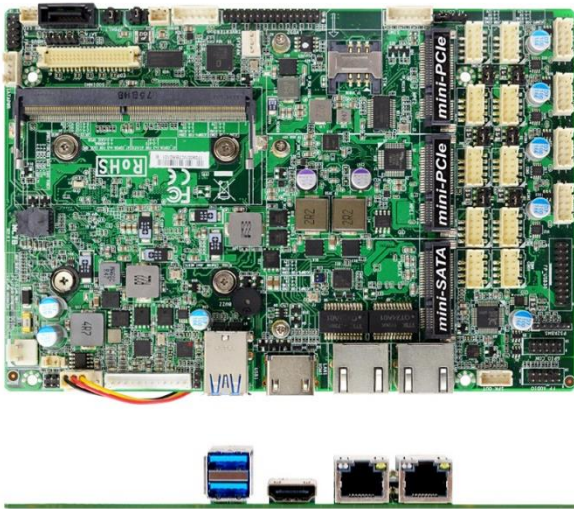


JNC7B-E7200

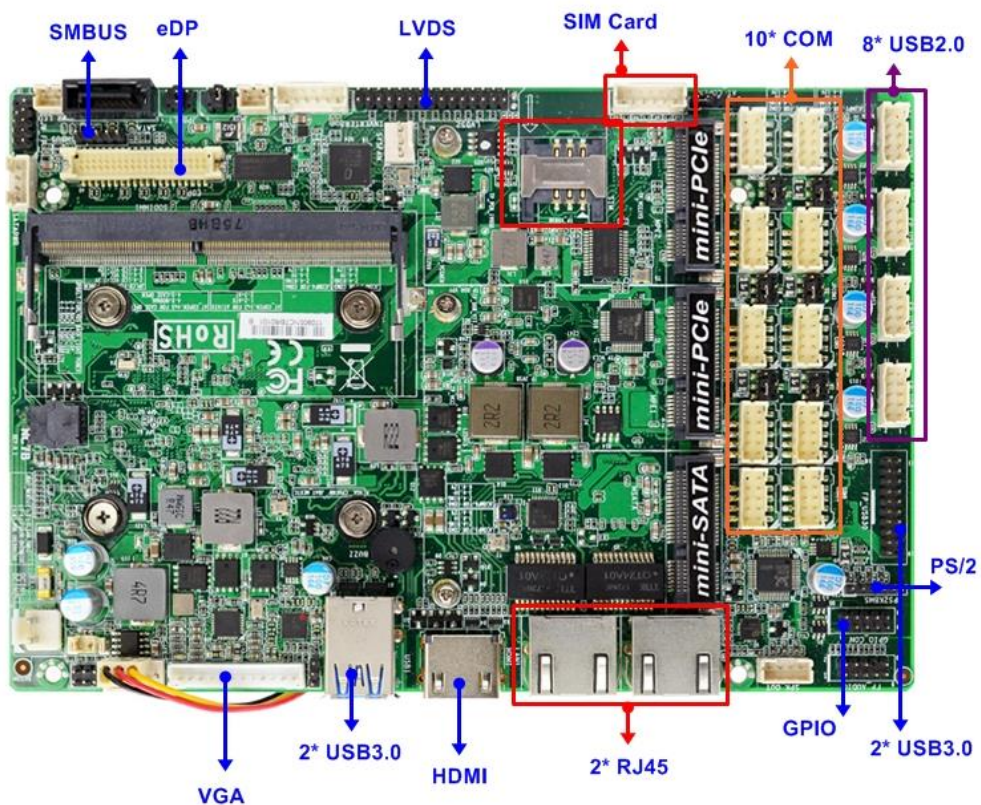
Intel® Kaby Lake-U I5-7200U SOC, DDR4 up to 16GB, support 12~24V DC input



1. INTEL® Kaby Lake-U I5-7200U SOC (CO-LAY I3/I5/I7 Series)
2. Onboard INTEL® 7200U 2.3GHz Dual Cores CPU
3. Support 1* DDR4/2133 SO-DIMM Max 16GB
4. Integrated HD Audio CODEC
5. Support 2* INTEL Gigabit LAN
6. Onboard 2 *MiniPCI-E
7. Onboard 1 *M-SATA
8. Support 4*USB3.0 and 8*USB2.0
9. Support 10*COM(COM1/2/3/4/5/6 Support 5V/12V)
10. Support Amplifier function(3W)
11. Support 2 * SIM Card
12. Support CRT+HDMI+ EDP Display(Co-lay LVDS)
13. Support Thunder Protection Function
14. Support Power Onboard(12~24V)
15. Form Factor: 120mm x177mm



Internal Diagram



Specifications

Form Factor	
Dimensions	- 120 x 177mm
Processor System	
CPU	- Intel® Kaby Lake-U I5-7200U
Core Number	- 2
Max Speed	- Turbo Boost 2.80GHz
L3 Cache	- 3MB
Chipset	- SOC
BIOS	- AMI 128M Flash ROM
Expansion Slot	
Mini-PCI-e	- 2 (full size)
m-SATA	- 1
SIM Card Holder	- 2
Memory	
Technology	- DDR4 2133MHz DRAM
Max.	- 16GB
Socket	- 1* SO-DIMM
Graphics	
Controller	- Intel® HD Graphics 520
VRAM	- Shared Memory
VGA	- 1 (Max. Resolution: 1920×1200@60Hz)
LVDS	- 1 (CO-Lay eDP, Max. Resolution:1920 x 1080@60Hz)
eDP 1.3	- 1 (CO-Lay LVDS, Max Resolution: 4096×2304@60Hz)
HDMI 1.4	- 1 (Max Resolution : 4096×2304@24Hz)
Multi Display	- 3 Displays
Ethernet	
Ethernet	- 10/100/1000 Mbps
Controller	- Intel® I219LM +i211AT Gigabit LAN
Connector	- 2 * RJ 45
Audio	
CODEC	- HD Audio : Realtek ALC662
Channel	- FP_AUDIO, 3W Amplifier Speaker out
SATA	
Max Data Transfer Rate	- 1 * SATAIII (6.0Gb/s)
Rear I/O	
HDMI	- 1

Ethernet	- 2
USB	- 2 *USB 3.0
Internal Connector	
USB	- 2 * USB3.0 + 8 * USB 2.0
PS/2	- 1
LVDS / inverter	- 1
eDP	- 1
VGA	- 1
Serial	- 10 (COM1/2/3/4/5/6 Support 5V/12V TTL)
SATA	- 1 * SATAIII (6.0Gb/s)
mPCIe	- 2 (full size)
m-SATA	- 1
SIM Card	- 2
GPIO	- 8bit(5V)
Chassis intrusion	- 1
Audio Header	- 1
SMBUS/ I2C	- 1
AT mode	- 1
Watchdog Timer	
Output	- From Super I/O to drag RESETCON#
Interval	- 256 segments (0 ~ 255sec)
Power Requirements	
Input PWR	- +12~24V DC-in (2-pin PWR Con)
Power On	AT/ATX Supported - AT : Directly PWR on as Power input ready - ATX: Press Button to PWR on after Power input ready
Certifications	
Certifications	- CE, FCC, RoHS, REACH
Environment	
Temperature	- Operating: 0°C ~ 60°C - Storage: -20°C ~ 85°C
Warranty	
Warranty	- 2 Years Limited Warranty
Packing	
Packing	- Net Weight: - Gross Weight: - Color Box dimension: 200*220*70mm

*Specifications subject to change without notice, not responsible for typographical errors. Does not include HDD or OS.

Accessories

Parts Number	Description
-----	JNC7B-E7200
J2SIM-CRADR10	JNC7B daughter card
G01-SATA3-BL-1F	CABLE for SATA3 50cm

Mechanical Drawings (Unit = mm)

