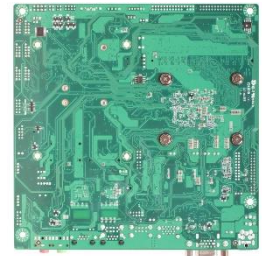




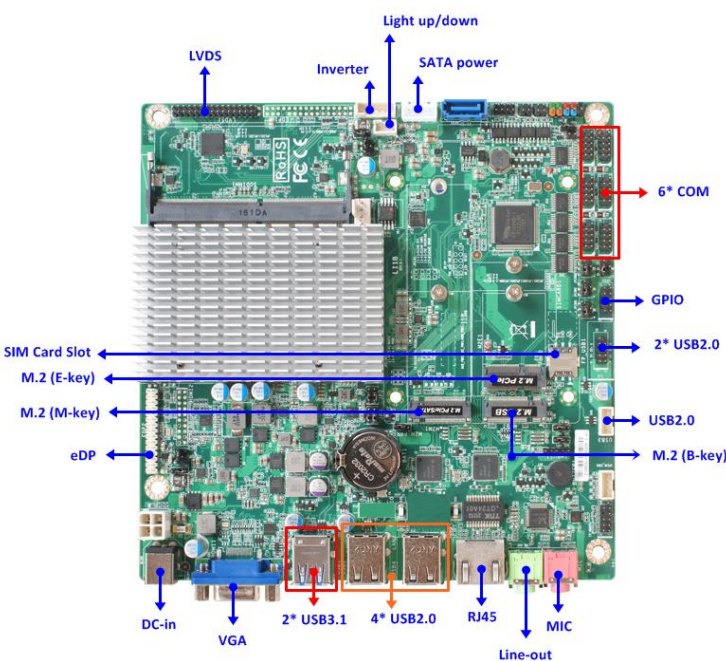
# JLI1B-00 Series

Intel® Elkhart Lake J6412 CPU, DDR4 up to 16GB

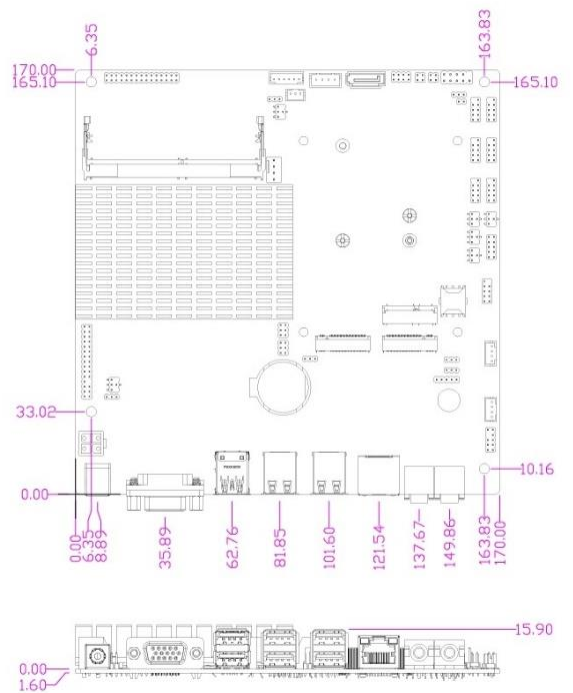
1. Intel® Elkhart Lake J6412 2.0GHz/QC Core MCP Processor(Turbo 2.6GHz)
2. Support 1\* DDR4 3200MHz up to 16GB
3. 1\* VGA, 1\* eDP, 1\* LVDS
4. 1\* Intel® i211AT GbE, 2\* RS232/422/485, 4\* RS232, 2\* USB3.1(Gen1), 7\* USB2.0
5. 1\* SATA III (6Gb/s), 1\* M.2 M-key, 1\* M.2 E-key support WIFI/BT Module, 1\*M.2 B-key support 4G/5G Module
6. 12V DC in
7. Thin Mini ITX Form Factor (170 \*170 mm)
8. JLIB-002 support TPM2.0 (option)



## I/O Diagram



## Mechanical Drawings (Unit = mm)



## Specifications

<b>Model</b>	<b>Form Factor</b>
<ul style="list-style-type: none"><li>JLI1B-00</li><li>JLIB-002 (TPM2.0)</li></ul>	Mini ITX ( 170 * 170mm)
<b>Processor System</b>	<b>Expansion Slot</b>
<ul style="list-style-type: none"><li>Intel® Elkhart lake J6412 Quad Core MCP Processor, 2.0GHz/10W, Turbo 2.6GHz</li><li>Intel SoC chipset</li><li>AMI 128Mb Flash ROM BIOS</li></ul>	<ul style="list-style-type: none"><li>1* M.2 E-key (2230, Support WIFI/BT Module)</li><li>1* M.2 B-key (3042/3052, Support 4G/5G Module)</li><li>1* SIM Card Holder (Nano)</li></ul>
<b>Memory</b>	<b>Graphics</b>
1* DDR4 3200MHz DRAM SO-DIMM up to 16GB	<ul style="list-style-type: none"><li>Intel® HD Graphics, shared memory</li><li>1* VGA (Max Resolution : 2560x1600@60Hz, Co-lay HDMI)</li><li>1* LVDS (Max Resolution : 2560x1600@60Hz, Co-lay eDP)</li><li>1* eDP (Max Resolution : 4096x2304@60Hz, Co-lay HDMI)</li><li>Support Triple Displays</li></ul>
<b>Ethernet</b>	<b>Audio</b>
1* Intel® i211AT GbE	<ul style="list-style-type: none"><li>Realtek HD Audio</li><li>3W AMP speaker</li></ul>
<b>Storage</b>	<b>Rear I/O</b>
<ul style="list-style-type: none"><li>1* M.2 M-key (2242/2280, SATA or NVMe- PCI-Ex2)</li><li>1* SATAIII (6.0Gb/s)</li></ul>	<ul style="list-style-type: none"><li>1* VGA</li><li>1* RJ45</li><li>2* USB3.1 (Gen1)</li><li>4* USB2.0</li><li>Line-out, MIC</li><li>12V DC-in</li></ul>
<b>Internal Connector</b>	<b>Watchdog Timer</b>
<ul style="list-style-type: none"><li>3* USB2.0</li><li>2* RS232/422/485</li><li>4* RS232</li><li>1* SATAIII (6.0Gb/s)</li><li>1* SATA Power</li><li>3* M.2 (M-key, E-key, B-key)</li><li>1* GPIO (8 bit, 5V)</li><li>1* AT mode</li><li>1* I2C/SMBUS</li><li>1* FP_Audio</li><li>1* Speaker</li><li>1* CPU FAN</li><li>JLIB-002 support TPM2.0 (Option)</li></ul>	<ul style="list-style-type: none"><li>From Super I/O to drag RESETCON#</li><li>256 segments (10sec ~ 255min)</li></ul>
<b>Power</b>	<b>Compliance</b>
DC-in 12V, AT/ATX Supported - AT: Directly PWR on as Power input ready - ATX: Press Button to PWR on after Power input ready	CE, FCC, RoHS, REACH
<b>Temperature</b>	<b>OS Support</b>
<ul style="list-style-type: none"><li>Operating: 0°C ~ 50°C</li><li>Storage: -20°C ~ 70°C</li><li>Humidity: 10% ~ 90% RH @40°C (non-condensing)</li></ul>	Windows 10, Linux
<b>Warranty</b>	
2 Years Limited Warranty	

\* Specifications subject to change without notice, not responsible for typographical errors. Does not include HDD or OS.

## Accessories

Parts Number	Description	Parts Number	Description
-----	JLI1B-00/JLIB-002 M/B	G01-XH4-SA15A-30F	SATA Power cable
F04-MB-054-F	IO Shield	G01-SATA3-BL-1F	SATAIII cable
		G01-COM-H2M20-1F	COM cable