

JETB4B

Dimension

170 * 91.8 mm

Chipset

Pericom PI7C9X2G608GP Gen 2 Switch

Intel i211AT GbE LAN

Feature

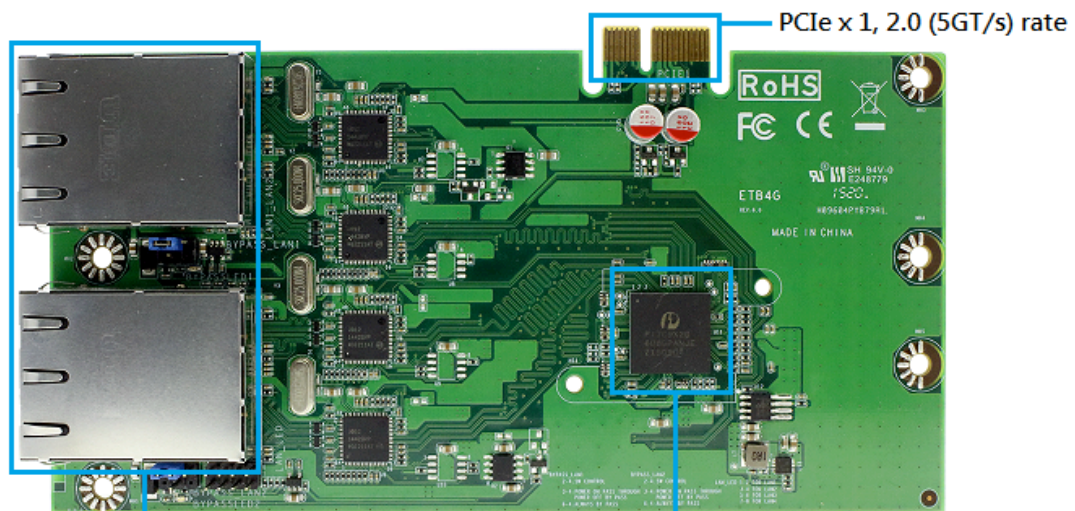
1. 4 * Intel GbE LAN
2. LAN1 & LAN2 supports 1 pair of Bypass LAN function.
3. LAN3 & LAN4 supports 1 pair of Bypass LAN function
4. Support Wake on LAN S1/S3/S4/S5 mode

Interface

PCIe x 1, 2.0 (5GT/s) rate

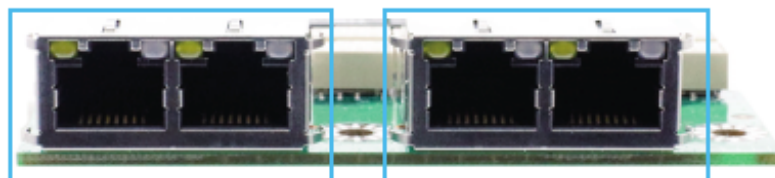
Application

1. VPN
2. UTM
3. Network bandwidth controller
4. Mail spam



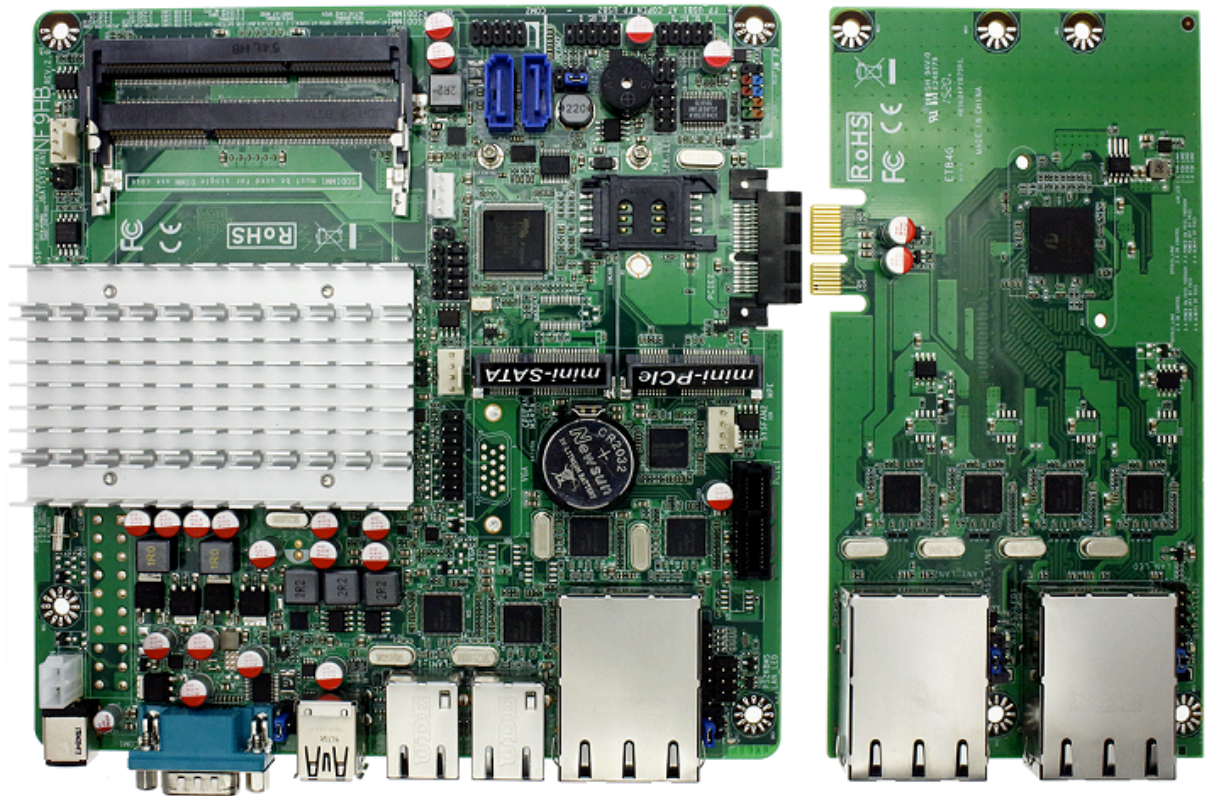
4 * Intel GbE LAN
Support Wake on LAN
S1/S3/S4/S5 mode

Pericom P17C9X2G608GP Gen2 Switch
Intel i211AT GbE LAN



LAN1 & LAN2 supports
Bypass LAN function.

LAN3 & LAN4 supports
Bypass LAN function.



The figure shown JETB4B plug to the JNF9HB-2930



The figure shown the rear I/O

