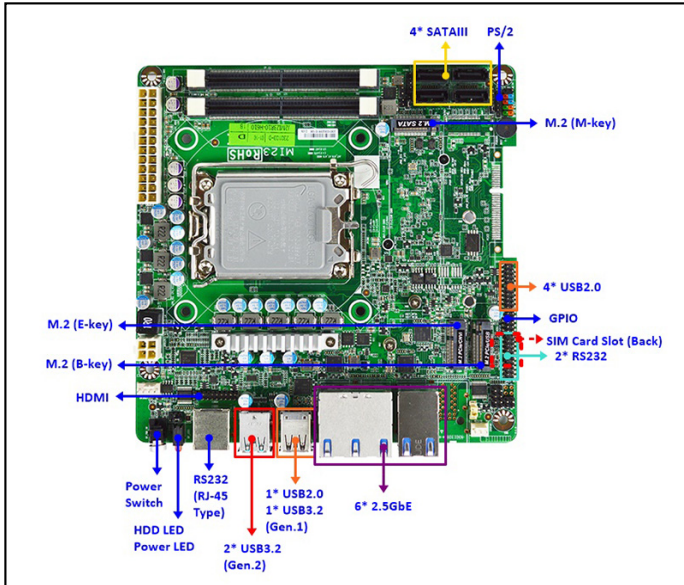


Mini-ITX Motherboard, Intel® LGA1700 12th/13th/14th Gen Socket Processor with 6 x 2.5GbE LANs



Features

- Powered by Intel® LGA1700 12th/13th/14th Gen Socket Processor (Alder Lake-S, TDP 65W) with Intel® H610/H610E Chipset
- Supports high-capacity memory with 2 x DDR5 SODIMM slots up to 96GB
- Offers high-speed and reliable networking with 6 x Intel 2.5GbE LAN ports
- Provides flexible storage options with 4 x SATA III slots and 1 x M.2 M-Key slot
- Additional expansion options with 1 x M.2 E-Key, 1 x M.2 B-Key, and 1 x SIM card slot
- Comprehensive I/O: 2 x USB 3.2 Gen.2, 1 x USB 3.2 Gen.1, 5 x USB 2.0, and 3 x COM ports
- Supports Intel® PTT (fTPM) and optional onboard TPM 2.0 (dTPM) Compatible with ATX power supply input

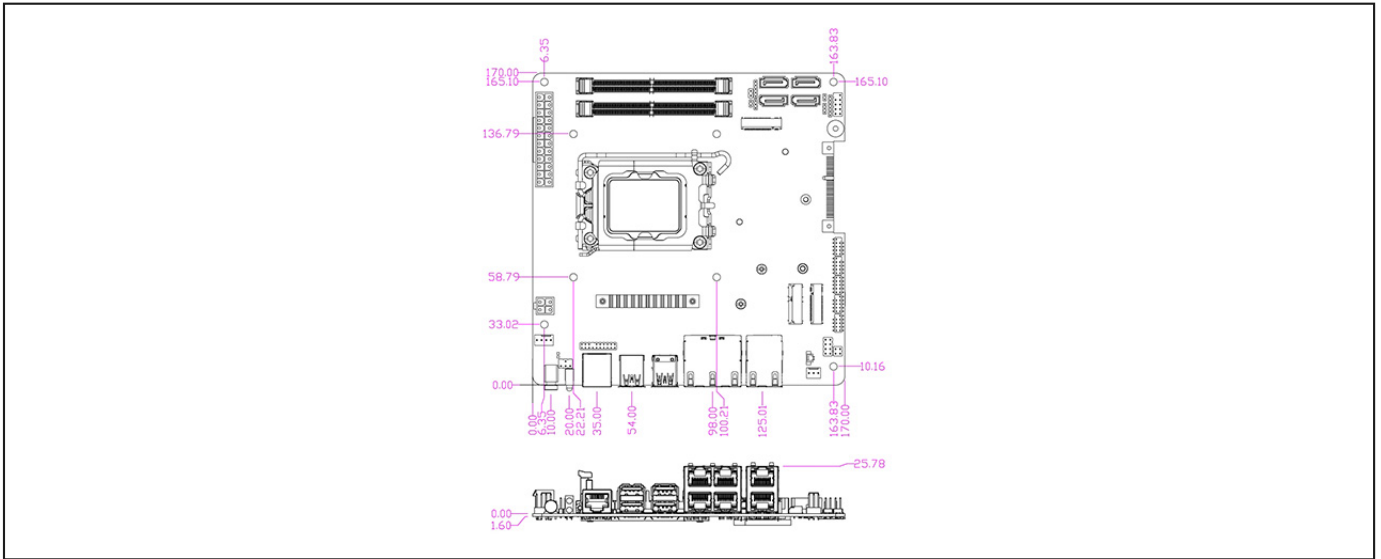
Packing List

PART NUMBER	DESCRIPTION	QTY
MI23-H610X Series	MI23-H610X Series M/B	1
F04-MB-096-F	MI23 I/O Shield	1
G01-SATA3-BL-1F	SATA Cable	1
G01-COM-H2M20-1F	COM Cable	1
G01-2X10A-HDMI-F	HDMI Cable	1

Specifications

SYSTEM	
MB FORM FACTOR	Mini-ITX
CPU	Intel® LGA1700 12/13/14th Gen Socket Processor (Formerly Alder Lake-S, TDP 65W)
CHIPSET	Intel® H610/H610E
MEMORY	2 x DDR5 4800MHz SO-DIMM, up to 96GB 2 x DDR5 5600MHz SO-DIMM, up to 64GB (Intel® 13th/14th Gen CPU)
BIOS	AMI Flash ROM
WATCHDOG TIMER	255 Levels
SECURITY	TPM2.0
DIMENSION (W X D)	170.0 (W) x 170.0 (D) mm (6.7" x 6.7")
OS SUPPORT	Windows® 11 (64bit) Windows® 10 (64bit) Linux
POWER	
POWER REQUIREMENT	ATX Power Supply
POWER ON MODE	AT / ATX
CONNECTOR	24+4-pin ATX PWR
DISPLAY	
GPU	Intel® UHD Graphics
HDMI	1 x HDMI (Max Resolution: 1920 x 1080@60Hz)
LAN	
ETHERNET	6 x RJ45 for Intel® I226-V 2.5GbE
USB PORT	
USB	2 x USB 3.2 Gen 2x1 (10Gbps, Formerly USB 3.1 Gen 2) 1 x USB 3.2 Gen 1x1 (5Gbps, Formerly USB 3.1 Gen 1) 1 x USB 2.0 Internal Header for 4 x USB 2.0
SERIAL PORT	
COM	1 x RJ45 for RS-232 Internal Header for 2 x RS-232
INTERNAL I/O	
GPIO	8-Bit
SMBUS	Yes
ADDITIONAL	1 x Chassis Intrusion 1 x PS/2 1 x AT Mode Selection
STORAGE	
SATA	4 x SATA III 1 x SATA Power Connector
EXPANSION	
M.2	1 x M-key 2280 (SATA) 1 x E-Key 2230 (USB 2.0/PCIe x1) Support CNVi 1 x B-key 3042 (USB3.2 Gen.1/USB2.0/PCIe x1 interface) support 4G Module
SIM	1 x SIM Card Slot
ENVIRONMENT & CERTIFICATION	
SHOCK	15G, 11ms duration
VIBRATION	1 Grms/ 5- 500Hz/ Operation
OPERATING TEMPERATURE	0°C ~ 60°C (32°F ~ 140°F)
STORAGE TEMPERATURE	-20°C ~ 85°C (-4°F ~ 185°F)
OPERATING HUMIDITY	10 ~ 90% Relative Humidity, Non-condensing
CERTIFICATION	CE/FCC Class A
ESG DECLARATION	EU RoHS China RoHS REACH

Dimension Unit: mm



Ordering Information

PART NUMBER	MI23-H6100-A1	MI23-H6102-A1
CPU	Intel® Socket LGA1700 CPU	Intel® Socket LGA1700 CPU
SECURITY	Intel® PTT (fTPM)	Intel® PTT (fTPM) & TPM 2.0 (dTPM)
POWER REQUIREMENT	ATX Power Supply	ATX Power Supply
GPU	Intel® UHD Graphics	Intel® UHD Graphics
HDMI	1 x HDMI	1 x HDMI
ETHERNET	6 x 2.5GbE	6 x 2.5GbE
USB	2 x USB 3.2 Gen.2	2 x USB 3.2 Gen.2
USB	1 x USB 3.2	1 x USB 3.2
USB	5 x USB 2.0	5 x USB 2.0
COM	3 x RS-232	3 x RS-232
SATA	4 x SATA III	4 x SATA III
M.2	1 x M-Key 2280	1 x M-Key 2280
M.2	1 x E-Key 2230	1 x E-Key 2230
M.2	1 x B-Key 3042	1 x B-Key 3042
SIM	1 x SIM Card Slot	1 x SIM Card Slot
OPERATING TEMPERATURE	0°C - 60°C (32°F - 140°F)	0°C - 60°C (32°F - 140°F)