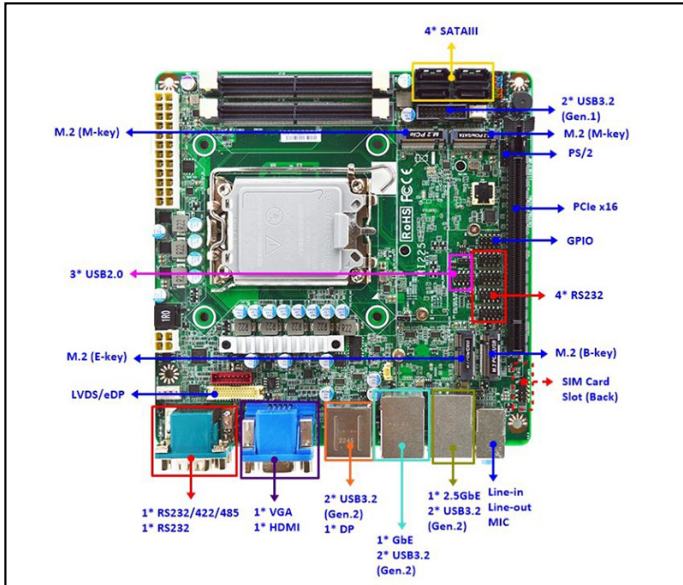


Mini-ITX with Intel® 14th/13th/12th Gen Processor, DDR5 up to 96GB, Quad Display Support, and PCIe Gen4 x16 Slot



Features

- Powered by Intel® LGA1700 Socket CPU (up to 65W TDP) with Intel® R680E chipset
- High-Performance Memory: Dual DDR5 SO-DIMM, up to 96GB
- Quad Display Support: 1 x HDMI, 1 x DP, 1 x VGA, and 1 x LVDS/eDP for flexible display configurations
- Reliable Networking: 1 x 2.5GbE and 1 x GbE for high-speed connectivity
- Storage & Expansion: 4 x SATA III (RAID 0,1,5,10), 2 x M.2 M-key for NVMe
- Additional Expansion: 1 x PCIe Gen4 x16 slot, 1 x M.2 E-key (CNVi), 1 x M.2 B-key (4G module)
- Extensive I/O: 6 x COM, 6 x USB 3.2 Gen 2, 2 x USB 3.2 Gen 1, 3 x USB 2.0

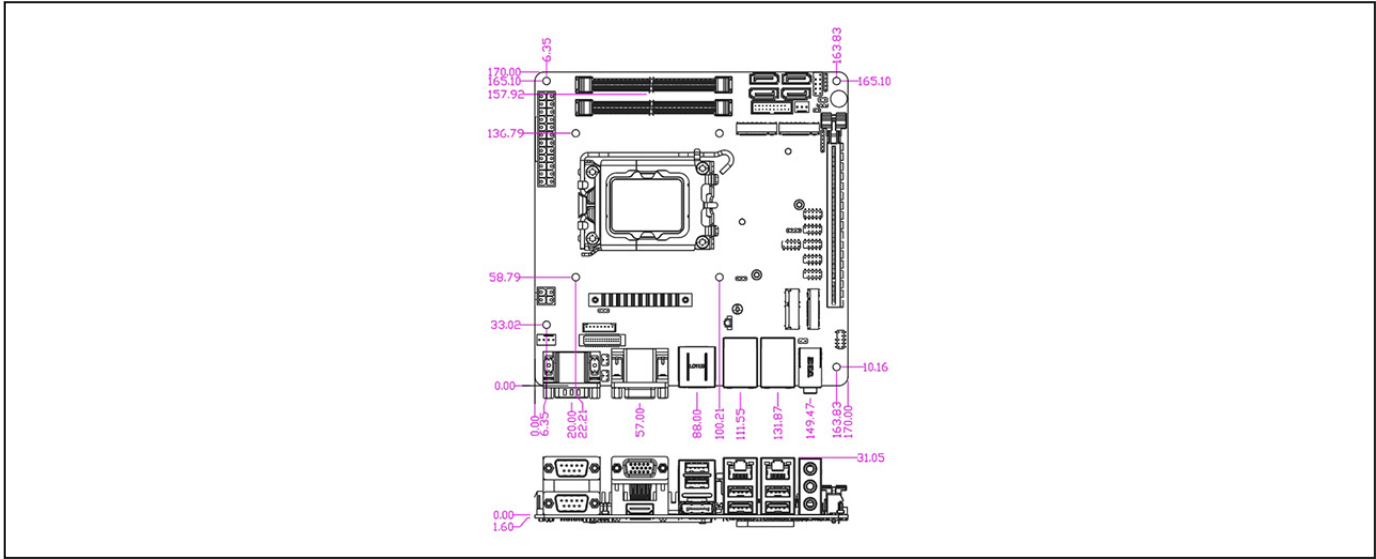
Packing List

PART NUMBER	DESCRIPTION	QTY
MI225R6800 Series	MI225R6800 Series M/B	1
F04-MB-073-1F	MI225 I/O Shield	1
G01-SATA3-BL-1F	SATA Cable	1

Specifications

SYSTEM	
MB FORM FACTOR	Mini-ITX
CPU	Intel® LGA1700 12/13/14th Gen Socket Processor (Formerly Alder Lake-S, TDP 65W)
CHIPSET	Intel® R680E
MEMORY	2 x DDR5 4800MHz SO-DIMM, up to 96GB 2 x DDR5 5600MHz SO-DIMM, up to 64GB (Intel® 13th/14th Gen CPU)
BIOS	AMI 256Mb Flash ROM
WATCHDOG TIMER	255 Levels
SECURITY	TPM2.0
DIMENSION (W X D)	170.0 (W) x 170.0 (D) mm (6.7" x 6.7")
OS SUPPORT	Windows® 11 (64bit) Windows® 10 (64bit) Linux
POWER	
POWER REQUIREMENT	ATX Power Supply
POWER ON MODE	AT / ATX
CONNECTOR	24+4-pin ATX PWR
DISPLAY	
GPU	Intel® UHD Graphics
LVDS	1 x LVDS (Max. Resolution: 1920 x 1200 @60Hz, Co-lay eDP)
DP	1 x DP 1.4a (Max Resolution: 8K@60Hz)
HDMI	1 x HDMI 2.0b (Max Resolution: 4096 x 2160@60Hz)
VGA	1 x VGA (Max Resolution: 1920 x 1080 @60Hz)
MULTIPLE DISPLAY	Support 4 Displays
AUDIO	
CODEC	Realtek Audio Codec
Line-in	1 x Audio Jack for Line-In
Line-out	1 x Audio Jack for Line-Out
MIC-in	1 x Audio Jack for MIC-In
LAN	
ETHERNET	1 x RJ45 for Intel® I219-LM GbE 1 x RJ45 for Intel® I226-V 2.5GbE
USB PORT	
USB	6 x USB 3.2 Gen 2x1 (10Gbps, Formerly USB 3.1 Gen 2) Internal Header for 2 x USB 3.2 Internal Header for 3 x USB 2.0
SERIAL PORT	
COM	1 x DB-9 for RS-232/422/485 1 x DB-9 for RS-232 Internal Header for 4 x RS-232
INTERNAL I/O	
GPIO	8-Bit
SMBUS	Yes
STORAGE	
ADDITIONAL	1 x Chassis intrusion 1 x PS/2 1 x Audio Header 1 x LVDS (co-layout eDP)
SATA	4 x SATA III
RAID	RAID 0, 1, 5, 10
EXPANSION	
M.2	1 x M-key 2280 (PCIe Gen.3 x4 interface) support NVMe 1 x M-Key 2242 (PCIe Gen.4 x4/SATA interface) support NVMe 1 x E-Key 2230 (USB 2.0/PCIe 3.0 x1) Support CNVi 1 x B-key 3042 (PCIe Gen.3 x1/USB3.2 Gen.2/USB2.0 interface) support 4G Module
PCI-E	1 x PCIe x16 (Gen.4)
SIM	1 x SIM Card Slot
ENVIRONMENT & CERTIFICATION	
SHOCK	15G, 11ms duration
VIBRATION	1 Grms/ 5- 500Hz/ Operation
OPERATING TEMPERATURE	0°C - 60°C (32°F - 140°F)
STORAGE TEMPERATURE	-20°C - 85°C (-4°F - 185°F)
OPERATING HUMIDITY	10 - 90% relative humidity, non-condensing
CERTIFICATION	CE/FCC Class A LVD
ESG DECLARATION	China RoHS EU RoHS REACH

Dimension Unit: mm



Ordering Information

PART NUMBER	MI225R6800-A1	MI225R6802-A1
CPU	Intel® Socket LGA1700 CPU	Intel® Socket LGA1700 CPU
SECURITY		TPM2.0 (dTPM)
POWER REQUIREMENT	ATX Power Supply	ATX Power Supply
GPU	Intel® UHD Graphics	Intel® UHD Graphics
LVDS	1 x LVDS/eDP	1 x LVDS/eDP
DP	1 x DP	1 x DP
HDMI	1 x HDMI	1 x HDMI
VGA	1 x VGA	1 x VGA
MULTIPLE DISPLAY	Support 4 Displays	Support 4 Displays
ETHERNET	1 x GbE	1 x GbE
ETHERNET	1 x 2.5GbE	1 x 2.5GbE
USB	6 x USB 3.2 Gen 2	6 x USB 3.2 Gen 2
USB	2 x USB 3.2	2 x USB 3.2
USB	3 x USB 2.0	3 x USB 2.0
COM	1 x RS-232/422/485	1 x RS-232/422/485
COM	5 x RS-232	5 x RS-232
SATA	4 x SATA III	4 x SATA III
M.2	1 x M-Key 2242	1 x M-Key 2242
M.2	1 x M-Key 2280	1 x M-Key 2280
M.2	1 x E-Key 2230	1 x E-Key 2230
M.2	1 x B-Key 3042	1 x B-Key 3042
PCI-E	1 x PCI-E x16	1 x PCI-E x16
SIM	1 x SIM Card Slot	1 x SIM Card Slot
OPERATING TEMPERATURE	0°C - 60°C (32°F - 140°F)	0°C - 60°C (32°F - 140°F)