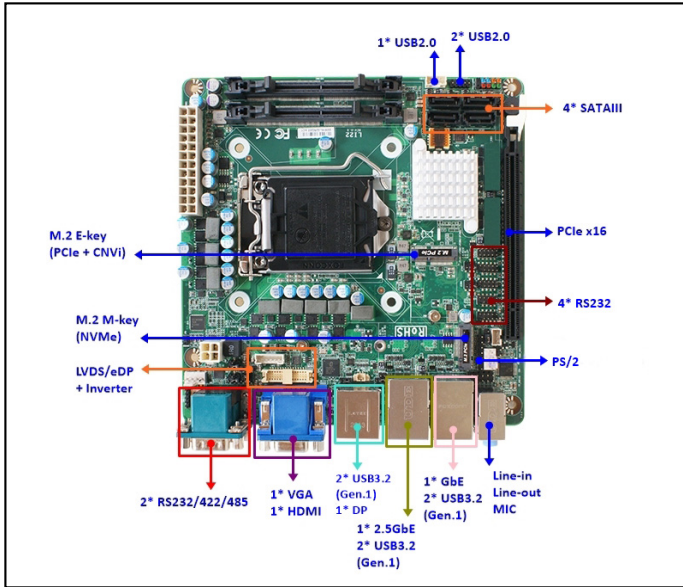


Mini-ITX Motherboard with Intel® LGA1200 10th/11th Gen Socket Processor and H420 Chipset



Features

- **Powered by Intel® LGA1200 10/11th Gen Socket Processor (Comet Lake-S, TDP 65W)**
- **Flexible Display Options:** Equipped with 1 x 5K DP, 1 x 4K HDMI, 1 x VGA, and 1 x LVDS/eDP output
- **Dual Ethernet Ports:** Includes 1 x 2.5GbE and 1 x GbE for high-speed, reliable networking
- **Expanded Storage:** Features 4 x SATA III and 1 x M.2 M-key for NVMe SSD
- **Additional Expansion Slots:** Offers 1 x M.2 E-key and 1 x PCIe x16 for add-on cards
- **Comprehensive I/O:** Includes 6 x USB 3.2, 3 x USB 2.0, 1 x GPIO, and 6 x COM ports
- **Power Support:** Compatible with 24 + 4 pin ATX power inputs
- **Enhanced Security:** Optional onboard TPM 2.0 Support

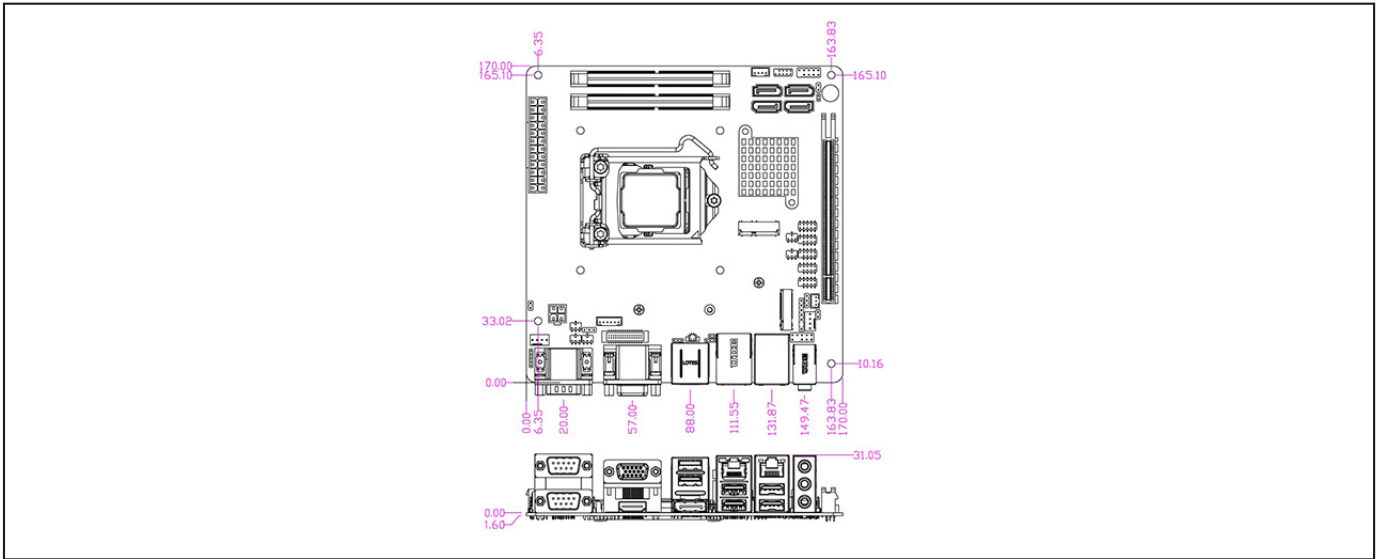
Packing List

PART NUMBER	DESCRIPTION	QTY
LI22-H420E	LI22-H420E / LI22-H420E2 M/B	1
F04-MB-073-1F	I/O shield	1
G01-COM-H2M22-1F	COM Cable	2
G01-SATA3-BL-1F	SATA Cable	1

Specifications

SYSTEM	
MB FORM FACTOR	Mini-ITX
CPU	Intel® LGA1200 10/11th Gen Socket Processor (Formerly Comet Lake-S, TDP 65W)
CHIPSET	Intel® H420E
MEMORY	2 x DDR4 2933/2666MHz SO-DIMM DRAM, up to 64GB
BIOS	AMI 256Mb Flash ROM
WATCHDOG TIMER	255 Levels
SECURITY	TPM2.0 (Optional)
DIMENSION (W X D)	170.0 (W) x 170.0 (D) mm (6.7" x 6.7")
OS SUPPORT	Windows® 11 (64bit) Windows® 10 (64bit) Linux
POWER	
POWER REQUIREMENT	ATX Power Supply
POWER ON MODE	AT / ATX
CONNECTOR	24+4-pin ATX PWR
DISPLAY	
GPU	Intel® HD Graphics
LVDS	1 x LVDS/eDP (Max Resolution : LVDS: 2560 x 1600@60Hz, eDP: 3840 x 2160@30Hz)
DP	1 x DP1.4 (Max Resolution: 5120 x 3200@60Hz)
HDMI	1 x HDMI 1.4 (Max Resolution: 4096 x 2160@30Hz)
VGA	1 x VGA (Max Resolution: 1920 x 1080 @60Hz)
MULTIPLE DISPLAY	Support 2 Displays
AUDIO	
CODEC	Realtek Audio Codec
Line-in	1 x Audio Jack for Line-In
Line-out	1 x Audio Jack for Line-Out
MIC-in	1 x Audio Jack for MIC-In
LAN	
ETHERNET	1 x RJ45 for Intel® I226-V 2.5GbE 1 x RJ45 for Intel® I219-LM GbE
USB PORT	
USB	6 x USB 3.2 Gen 1x1 (5Gbps, Formerly USB 3.1 Gen 1) Internal Header for 3 x USB 2.0
SERIAL PORT	
COM	2 x DB-9 for RS-232/422/485 with 5V/12V header Internal Header for 4 x RS-232 with 5V/12V header
INTERNAL I/O	
GPIO	8-Bit (5V)
SMBUS	Yes
I2C	Yes
FAN	1 x CPU Fan Header (Smart Fan) 1 x System Fan Header
ADDITIONAL	1 x Chassis Intrusion 1 x PS/2 1 x Inverter (PH2.0) 1 x Light Up/Down (PH2.0) 1 x AT Mode Selection
EXPANSION	
M.2	1 x M-Key 2242/2280 (PCIe x4) support NVMe SSD 1 x E-Key 2230 (USB 2.0/PCIe x1) for WIFI/BT Module
PCI-E	1 x PCI-E x16
ENVIRONMENT & CERTIFICATION	
SHOCK	15G, 11ms duration
VIBRATION	1 Grms/ 5- 500Hz/ Operation
OPERATING TEMPERATURE	0°C - 60°C (32°F - 140°F)
STORAGE TEMPERATURE	-20°C - 70°C (-4°F - 158°F)
OPERATING HUMIDITY	10 - 90% Relative Humidity, Non-condensing
CERTIFICATION	CE/FCC Class A
ESG DECLARATION	EU RoHS China RoHS REACH

Dimension Unit: mm



Ordering Information

PART NUMBER	LI22-H420E	LI22-H420E2
CPU	Intel® Socket LGA1200 CPU	Intel® Socket LGA1200 CPU
SECURITY		TPM2.0
POWER REQUIREMENT	ATX Power Supply	ATX Power Supply
GPU	Intel® HD Graphics	Intel® HD Graphics
LVDS	1 x LVDS/eDP	1 x LVDS/eDP
DP	1 x DP	1 x DP
HDMI	1 x HDMI	1 x HDMI
VGA	1 x VGA	1 x VGA
MULTIPLE DISPLAY	Support 2 Displays	Support 2 Displays
ETHERNET	1 x 2.5GbE	1 x 2.5GbE
ETHERNET	1 x GbE	1 x GbE
USB	6 x USB 3.2	6 x USB 3.2
USB	3 x USB 2.0	3 x USB 2.0
COM	2 x RS-232/422/485	2 x RS-232/422/485
COM	4 x RS-232	4 x RS-232
SATA	4 x SATA III	4 x SATA III
M.2	1 x M-Key 2242/2280	1 x M-Key 2242/2280
M.2	1 x E-Key 2230	1 x E-Key 2230
PCI-E	1 x PCI-E x16	1 x PCI-E x16
OPERATING TEMPERATURE	0°C - 60°C (32°F - 140°F)	0°C - 60°C (32°F - 140°F)