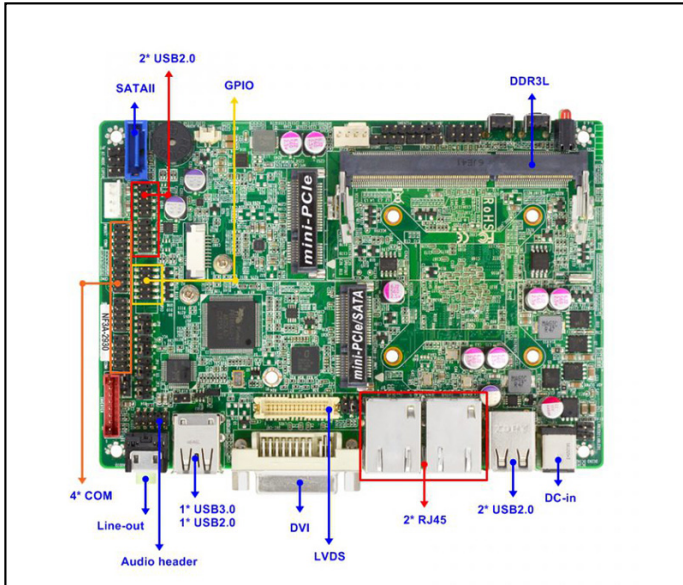


3.5" SBC with Intel® SoC-N2930/N2807, Dual Display Support, Dual GbE, and 9–24V DC-in



## Features

- Powered by Intel® N2930/M2807 SoC Processor (Bay Trail)
- Dual GbE LAN: High-speed, reliable networking
- Display Support: 1 x LVDS and 1 x DVI-I output
- Storage & Expansion: 1 x SATA II, 1 x mSATA, 1 x MiniPCIe
- Comprehensive I/O: 4 x COM, 1 x USB 3.0, 7 x USB 2.0
- Wide Power Input: DC-in 9–24V for adaptable power needs
- 3.5" SBC Form Factor Design for Fanless Systems

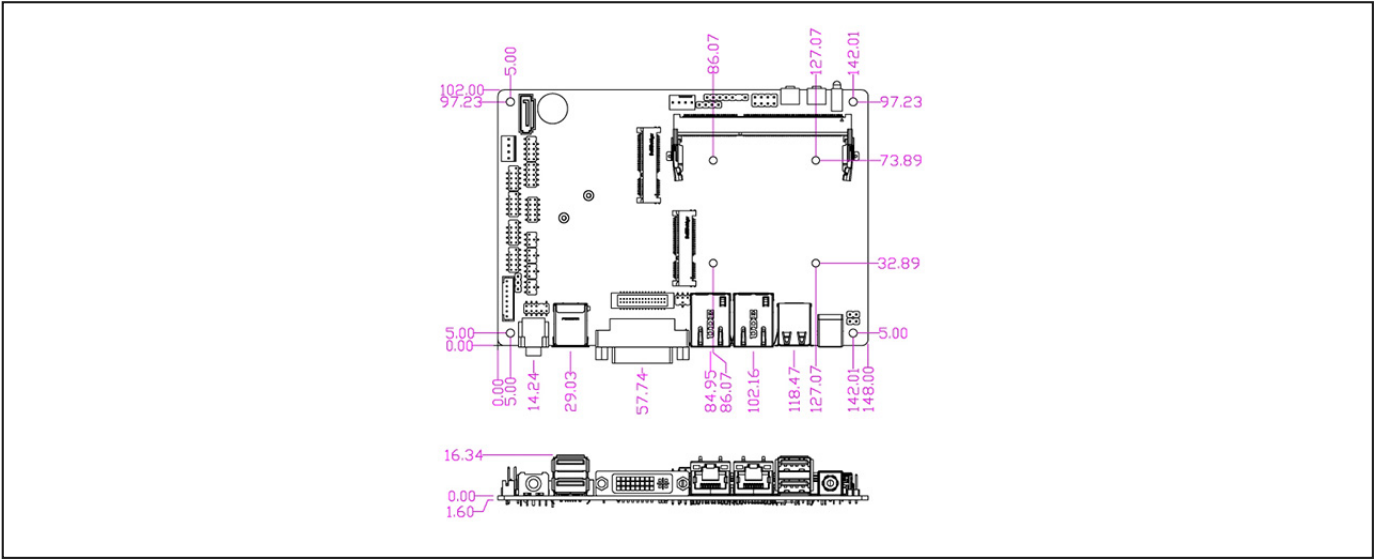
## Packing List

PART NUMBER	DESCRIPTION	QTY
JNF3A Series	JNF3A Series M/B	1
G01-SATA-BK-B-2F	SATA Cable	1
G01-PW4PS-2S-323F	SATA Power Y Cable	1
G01-COM-H2M22-1F	COM Cable	2
G01-DVI-VGA-W-F	DVI to VGA Converter	1
HCS365MHT01B-F	Fin Type Heatsink	1

## Specifications

SYSTEM	
MB FORM FACTOR	3.5"
CPU	Onboard Intel® Celeron® Processor N2930 (Formerly Bay Trail, TDP 7.5W) Onboard Intel® Celeron® Processor N2807 (Formerly Bay Trail, TDP 4.3W) Onboard Intel® Celeron® Processor J1900 (Formerly Bay Trail, TDP 10W)
CHIPSET	Intel® SoC
MEMORY	1 x DDR3L 1333MHz, Single Channel SO-DIMM, up to 8GB
WATCHDOG TIMER	255 Levels
DIMENSION (W X D)	148.0 (W) x 102.0 (D) mm (5.8" x 4.0")
OS SUPPORT	Windows® 11 (64bit) Windows® 10 (64bit) Linux
POWER	
POWER REQUIREMENT	DC-in 9–24V
POWER ON MODE	AT / ATX
CONNECTOR	DC Jack
DISPLAY	
GPU	Intel® HD Graphics
LVDS	1 x 24-bit Dual Channel LVDS (Max. Resolution: 1920 x 1200 @60Hz)
MULTIPLE DISPLAY	Support 2 Displays
AUDIO	
CODEC	Realtek Audio Codec
LAN	
ETHERNET	2 x RJ45 for Realtek® RTL8111H GbE
USB PORT	
USB	1 x USB 3.0 3 x USB 2.0 Internal Header for 4 x USB 2.0
SERIAL PORT	
COM	Internal Header for 4 x RS-232/422/485
INTERNAL I/O	
GPIO	8-Bit
FAN	1 x CPU Smart Fan
ADDITIONAL	1 x Chassis intrusion 1 x Audio Header 1 x PS/2 1 x LVDS
STORAGE	
SATA	1 x SATA II 1 x SATA Power Connector
MINI PCI-E	1 x Half Size Mini-PCIe
mSATA	1 x Full Size mSATA (shared with mPCIe)
ENVIRONMENT & CERTIFICATION	
SHOCK	15G, 11ms duration
VIBRATION	1 Grms/ 5- 500Hz/ Operation
OPERATING TEMPERATURE	-20°C - 60°C (-4°F - 140°F)
STORAGE TEMPERATURE	-40°C - 70°C (-40°F - 158°F)
OPERATING HUMIDITY	10 - 90% relative humidity, non-condensing
STORAGE HUMIDITY	0 - 95% Relative Humidity, Non-condensing
CERTIFICATION	CE/FCC Class A
ESG DECLARATION	EU RoHS China RoHS REACH

## Dimension Unit: mm



## Ordering Information

PART NUMBER	JNF3A-2930	JNF3A-2807	JNF3A-1900
CPU	Intel® Celeron® N2930	Intel® Celeron® N2807	Intel® Celeron® J1900
POWER REQUIREMENT	DC-in 9-24V	DC-in 9-24V	DC-in 9-24V
GPU	Intel® HD Graphics	Intel® HD Graphics	Intel® HD Graphics
LVDS	1 x LVDS	1 x LVDS	1 x LVDS
MULTIPLE DISPLAY	Support 2 Displays	Support 2 Displays	Support 2 Displays
ETHERNET	2 x GbE	2 x GbE	2 x GbE
USB	1 x USB 3.0	1 x USB 3.0	1 x USB 3.0
USB	7 x USB 2.0	7 x USB 2.0	7 x USB 2.0
COM	4 x RS-232/422	4 x RS-232/422	4 x RS-232/422
SATA	1 x SATA II	1 x SATA II	1 x SATA II
MINI PCI-E	1 x Full mini PCIe, 1 x Half mini PCIe	1 x Full mini PCIe, 1 x Half mini PCIe	1 x Full mini PCIe, 1 x Half mini PCIe
mSATA	1 x mSATA	1 x mSATA	1 x mSATA
OPERATING TEMPERATURE	-20°C - 60°C (-4°F - 140°F)	-20°C - 60°C (-4°F - 140°F)	-20°C - 60°C (-4°F - 140°F)